

||| KUMARS |||

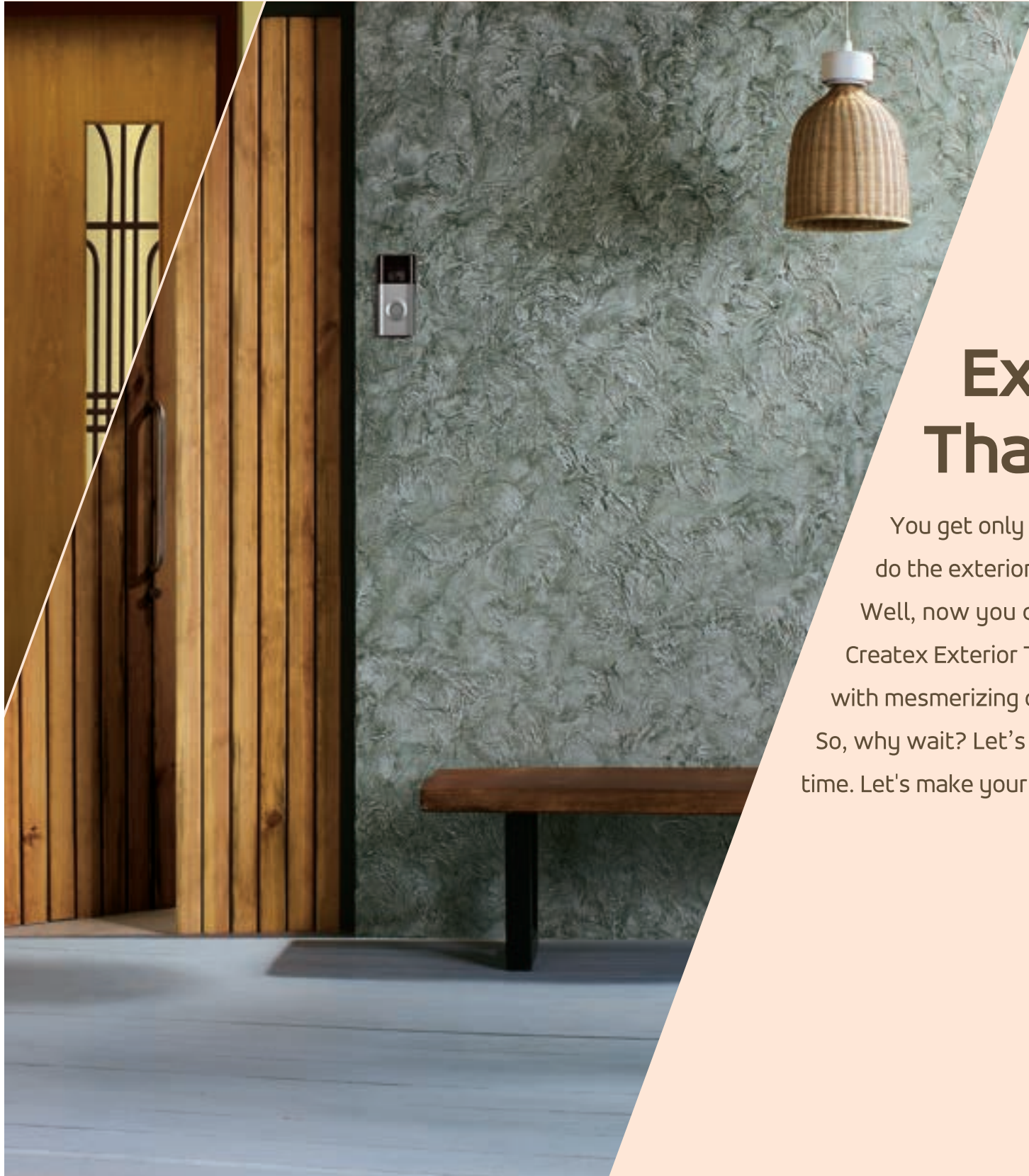
APEX CREATEX

Textures for Exterior Spaces



*5 years warranty applicable on scratch finish only.





Exterior Textures That Mesmerize

You get only one chance to make your first impression and so do the exteriors of your homes.

Well, now you can transform this unexplored space with Apex Createx Exterior Textures that will not only leave you spellbound with mesmerizing designs but also leave an everlasting impression. So, why wait? Let's start transforming your exteriors, one wall at a time. Let's make your home beautiful.



Scan to watch application





Scratch Finish

Apex Createx Scratch Finish is a synthetic intermediate finish designed with high-quality exterior durable acrylic modified resin and special quality texturizing material. With its unique engraved finish, it offers a wide range of patterns that combines decoration and protection.

Go ahead, transform your exteriors with these warm and inviting textures that are crafted to instil a new charm in your home.

Product Code: 1B53





Apex Ultima
Winter Moon (8258)



Apex Ultima
Winter Moon (8258)



Apex Ultima
Beige - N (0302)



Apex Ultima
Basecoat - Raven Song (8253)
Topcoat - Smoke - N (0616)



Apex Ultima
Piece Of Sky (7304)



Createx Scratch Finish - Crisscross Pattern



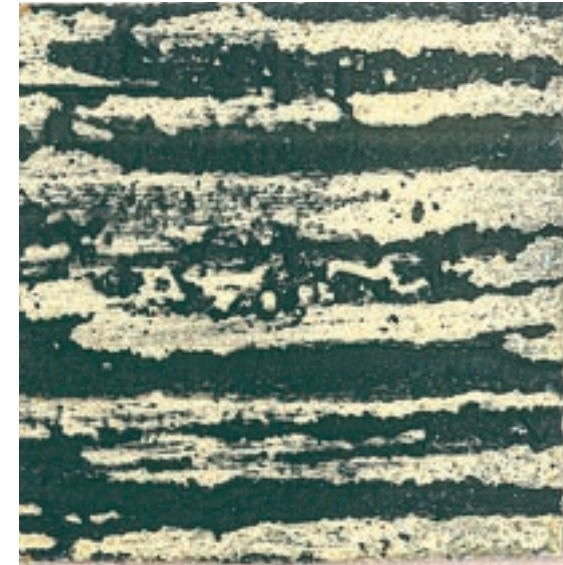
Apex Ultima
Basecoat - Nut Brown-N (0419)
Topcoat - Oyster Grey (8473)



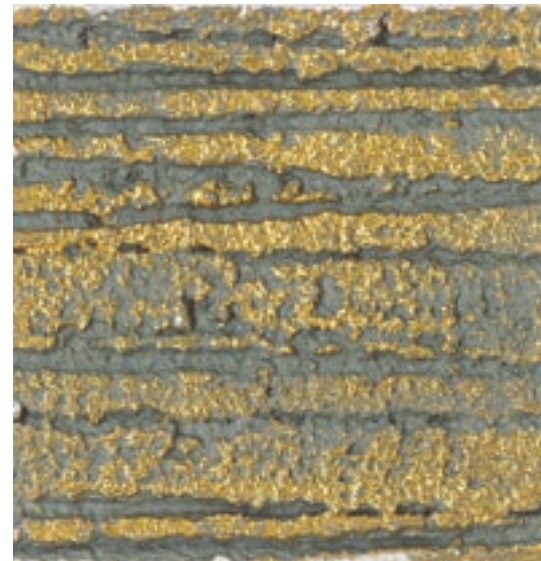
Creutex Scratch Finish - Groovy Woods Pattern



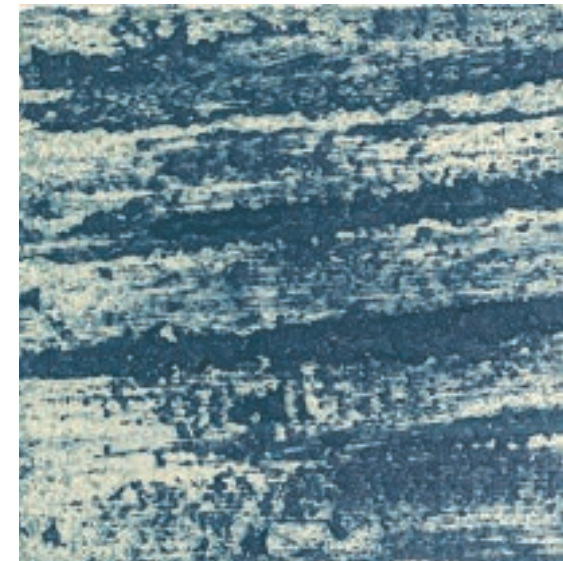
Apex Ultima
Basecoat - Nut Brown - N (0419)
Topcoat - Oyster Grey (8473)



Apex Ultima
Basecoat - Autumn Shower (7381)
Topcoat - Desert Sun (7938)



Apex Ultima
Basecoat - Oxford Grey (8328)
Topcoat - Ultima Gold - N (M045)



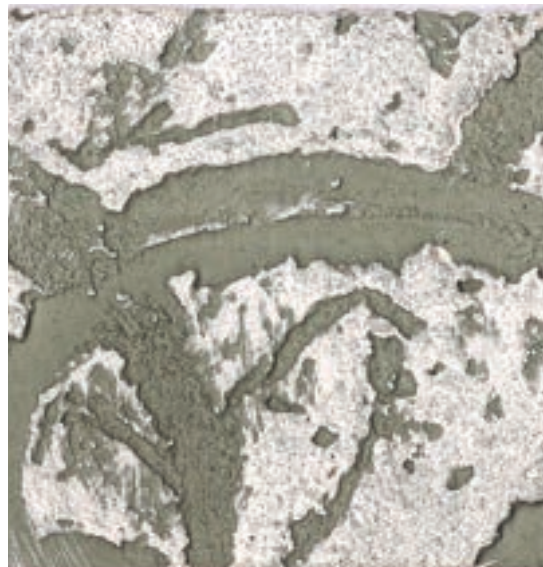
Apex Ultima
Basecoat - Pigeon Crest (X148)
Topcoat - Silver Moon - N (K093)



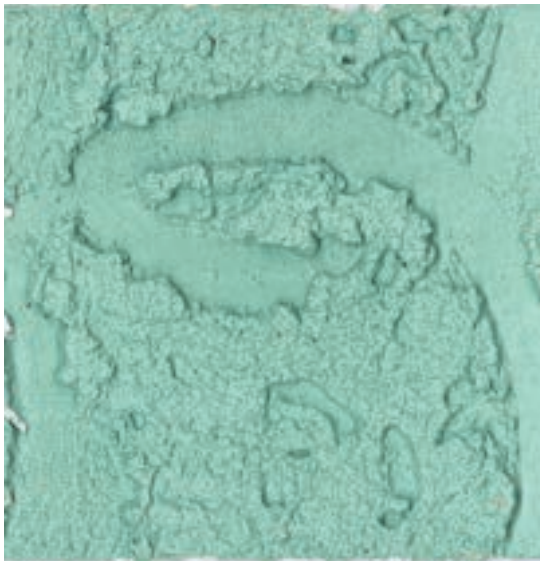
Apex Ultima
Basecoat - Raven Song (8253)
Topcoat - Indian Copper (M501)



Apex Ultima
Basecoat - Raven Song (8253)
Topcoat - Indian Copper (M501)



Apex Ultima
Basecoat - Rock Wall (8424)
Topcoat - Smoke - N (0616)



Apex Ultima
Corsican Sky (7305)



Apex Ultima
Basecoat - Steel (6142)
Topcoat - Posh Peach - N (9918)



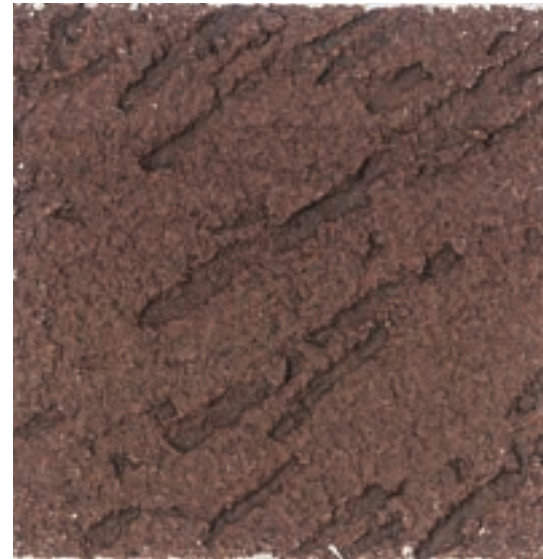
Createx Scratch Finish - Swirly Circle Pattern



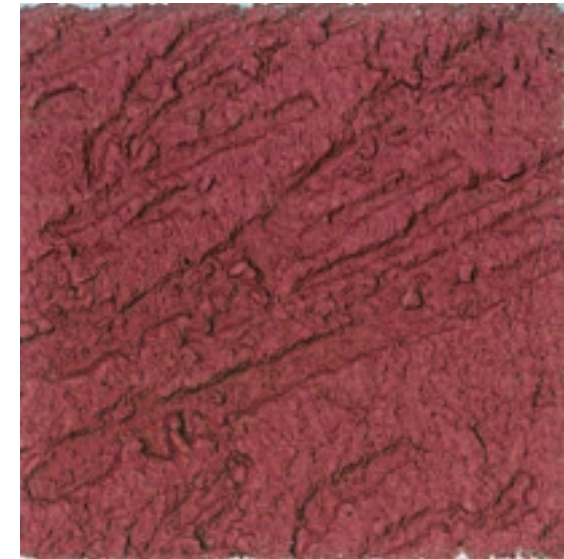
Apex Ultima
Frosted Chocolate (8654)



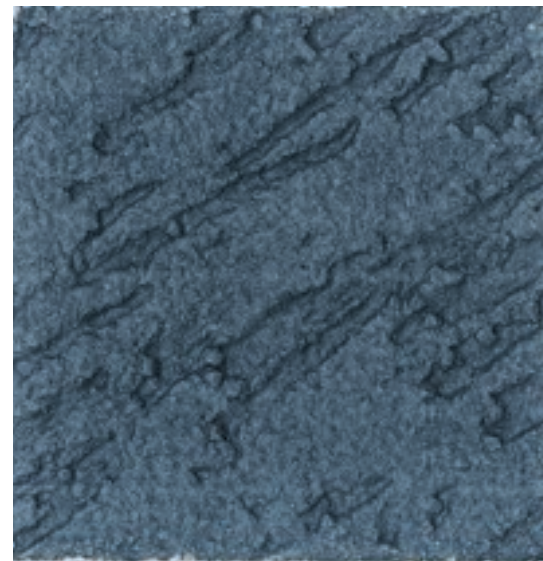
Createx Scratch Finish - Rainfall Pattern



Apex Ultima
Frosted Chocolate (8654)



Apex Ultima
Deep Rosewood - N (9996)



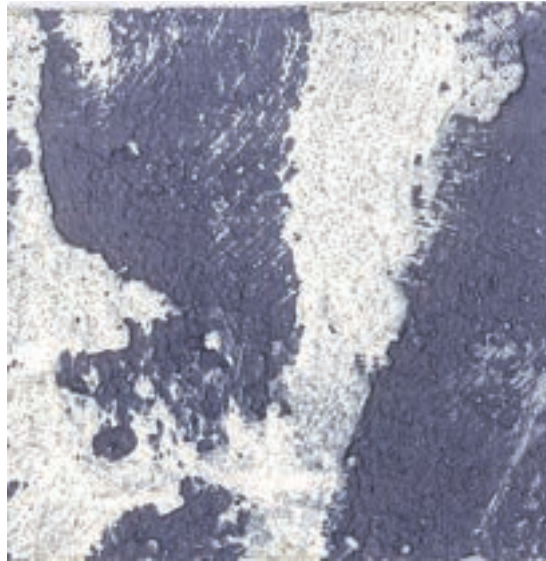
Apex Ultima
Blue Lake (8262)



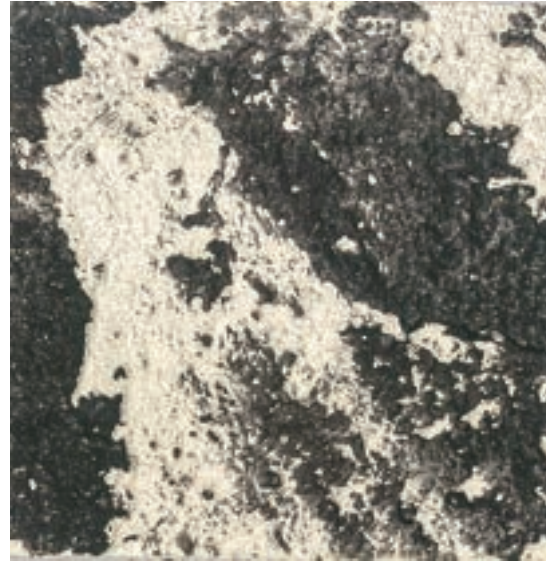
Apex Ultima
Sands Of Time (4202)



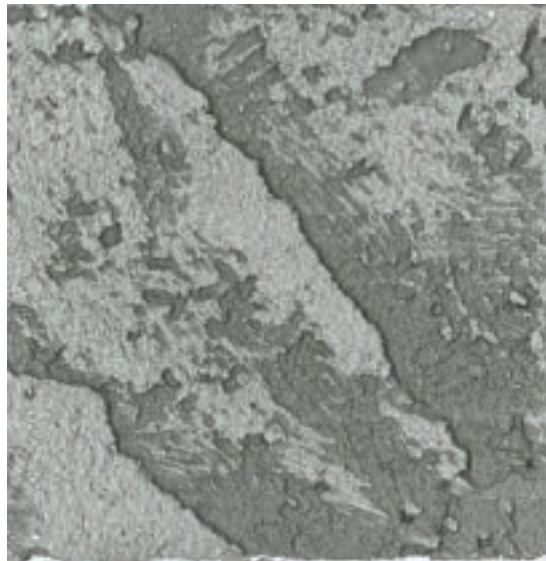
Apex Ultima
Basecoat - Purple Pansy (7182)
Topcoat - Smoke - N (0616) - Colourwash



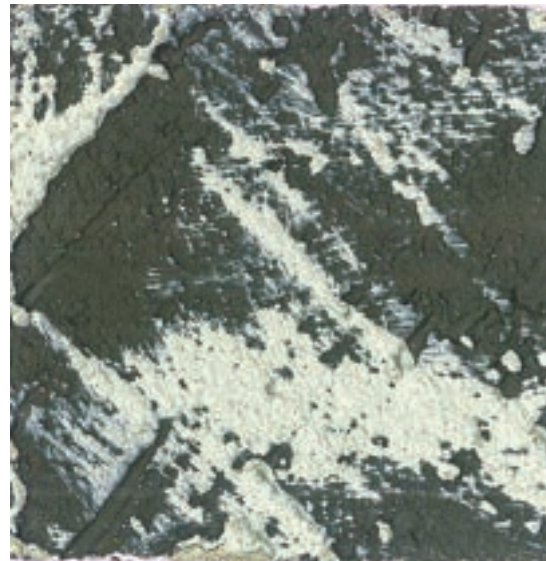
Apex Ultima
Basecoat - Purple Pansy (7182)
Topcoat - Smoke - N (0616) - Colourwash



Apex Ultima
Basecoat - Smoke - N (0616)
Topcoat - Thunder Cloud (8261) - Colourwash



Apex Ultima
Basecoat - Grey Matter (8304)
Topcoat - Steel Grey (0643) - Colourwash



Apex Ultima
Basecoat - Enchanted Forest (8389)
Topcoat - Grazing Land (8394) - Colourwash



Createx Scratch Finish - Slate Pattern



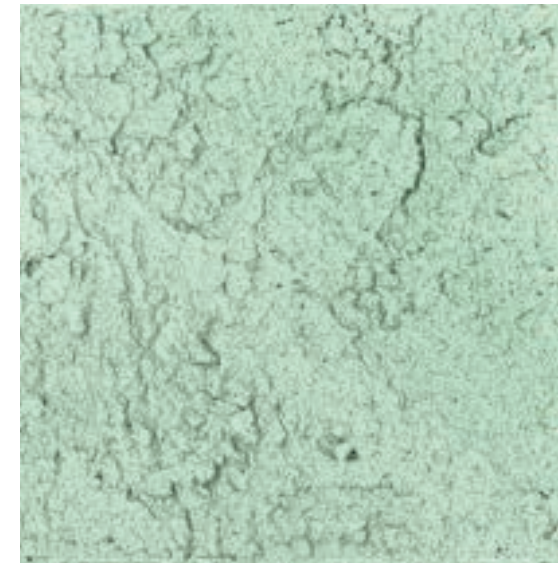
Apex Ultima
Oceans Whisper (7436)



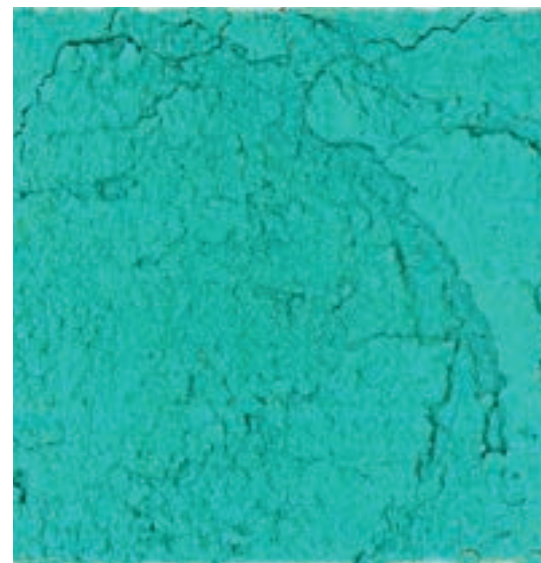
Creutex Scratch Finish - Ocean Pattern



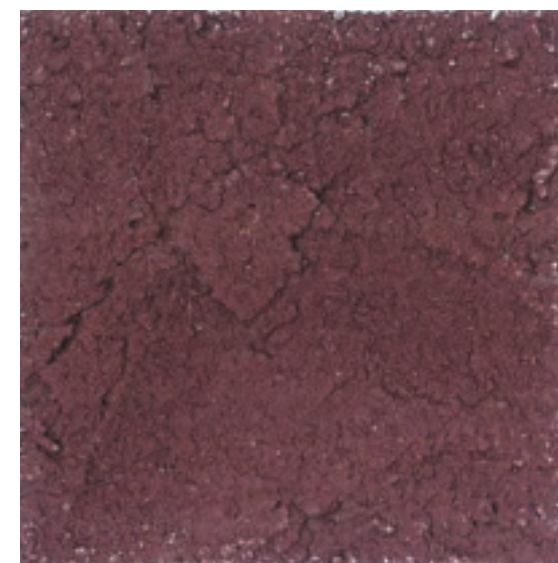
Apex Ultima
Oceans Whisper (7436)



Apex Ultima
Sea Dreams (8345)



Apex Ultima
Teal Blast (7503)



Apex Ultima
Vine Yard (8709)





Dholpur Finish

Apex Createx Dholpur is a synthetic intermediate finish designed with high-quality acrylic modified resins for durable exteriors. With its unique stone-like resemblance, it has a wide range of patterns that combine the decoration with protection and imparts a super-premium look to the exterior walls.

Adorn the entrance to your house with these textures and let your walls make a statement.

Product Code: 6711



Apex Ultima
Red Rust - N (9937)



Creutex Dholpur - Brick Pattern



Apex Ultima
Red Rust - N (9937)



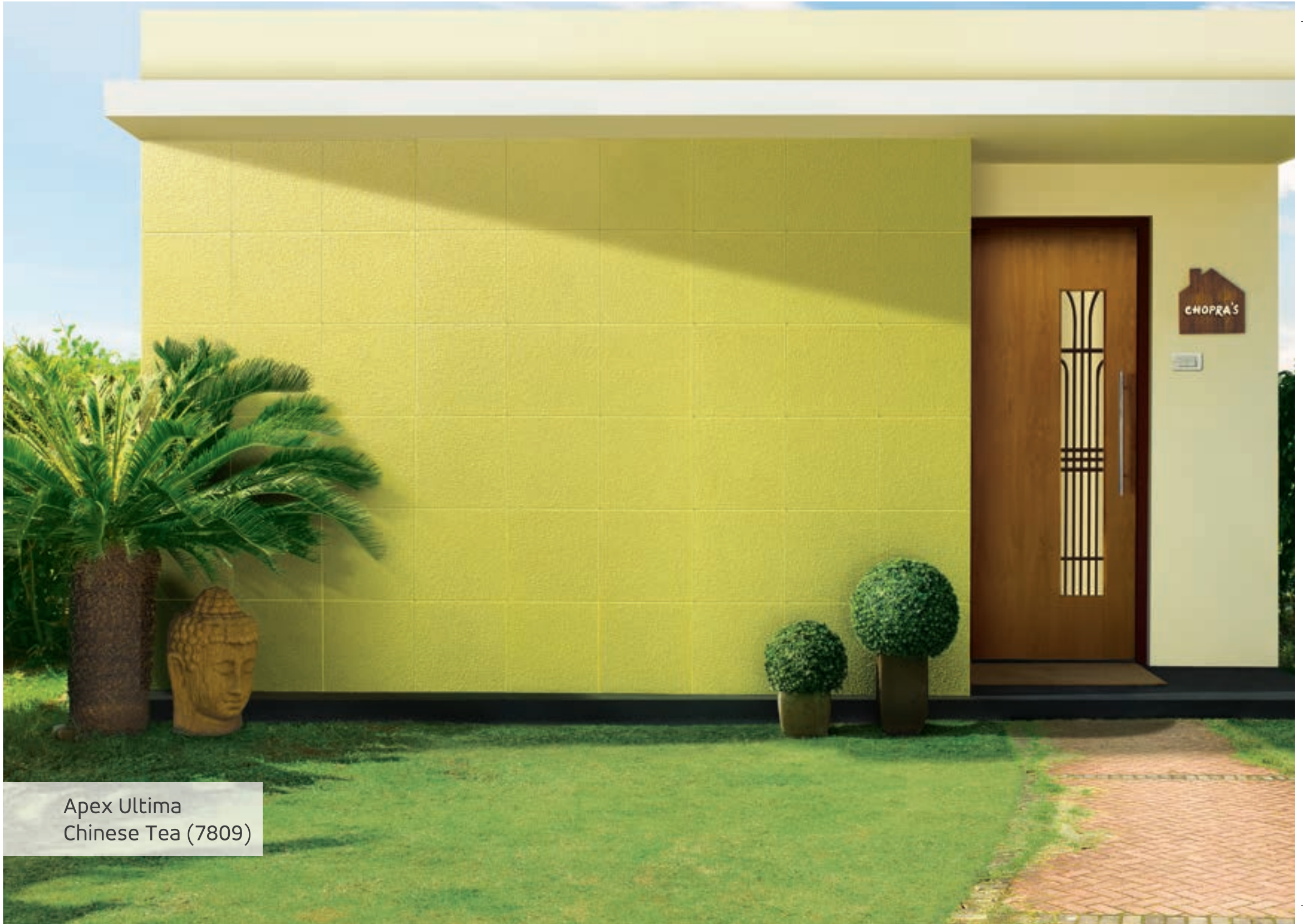
Apex Ultima
Warmstone (0N02)



Apex Ultima
Sleigh Bells (8295)



Apex Ultima
Topcoat 1 - Steel Grey (0643)
Topcoat 2 - Antique White (0940)
Grooves - Frosted Chocolate (8654)



Apex Ultima
Chinese Tea (7809)



Apex Ultima
Chinese Tea (7809)



Apex Ultima
Barley (0572)



Apex Ultima
Sleigh Bells (8295)



Apex Ultima
Brick Red - N (0533)



Createx Dholpur - Spray Pattern



Apex Ultima
Tropics (8513)



Createx Dholpur - Brushing Pattern



Apex Ultima
Tropics (8513)



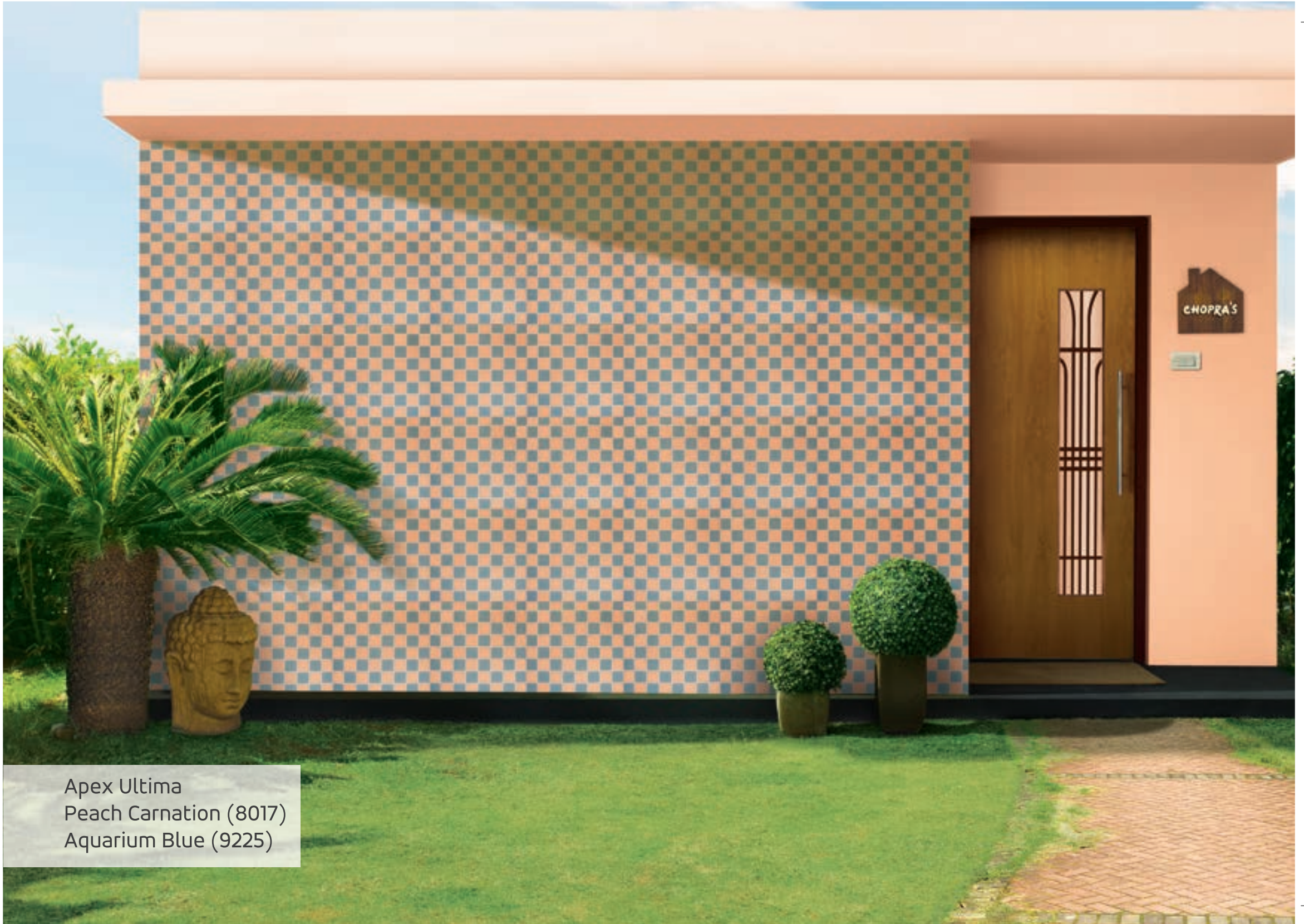
Apex Ultima
Mud House (8656)



Apex Ultima
Terra Luna - N (K095)



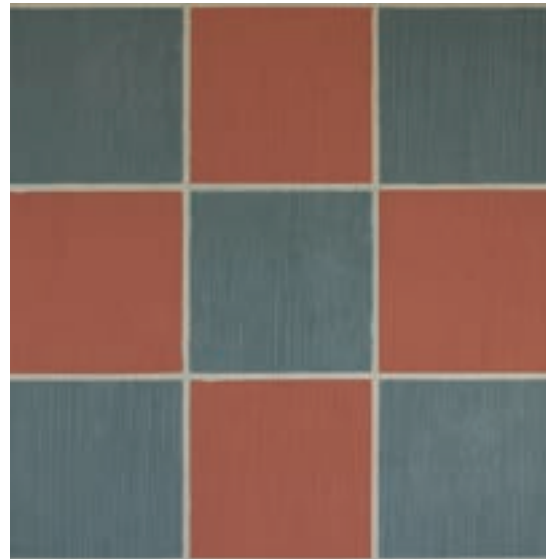
Apex Ultima
Steel Grey (0643)



Apex Ultima
Peach Carnation (8017)
Aquarium Blue (9225)



Apex Ultima
Classic Cyan (9230)
Wild Mint (7545)



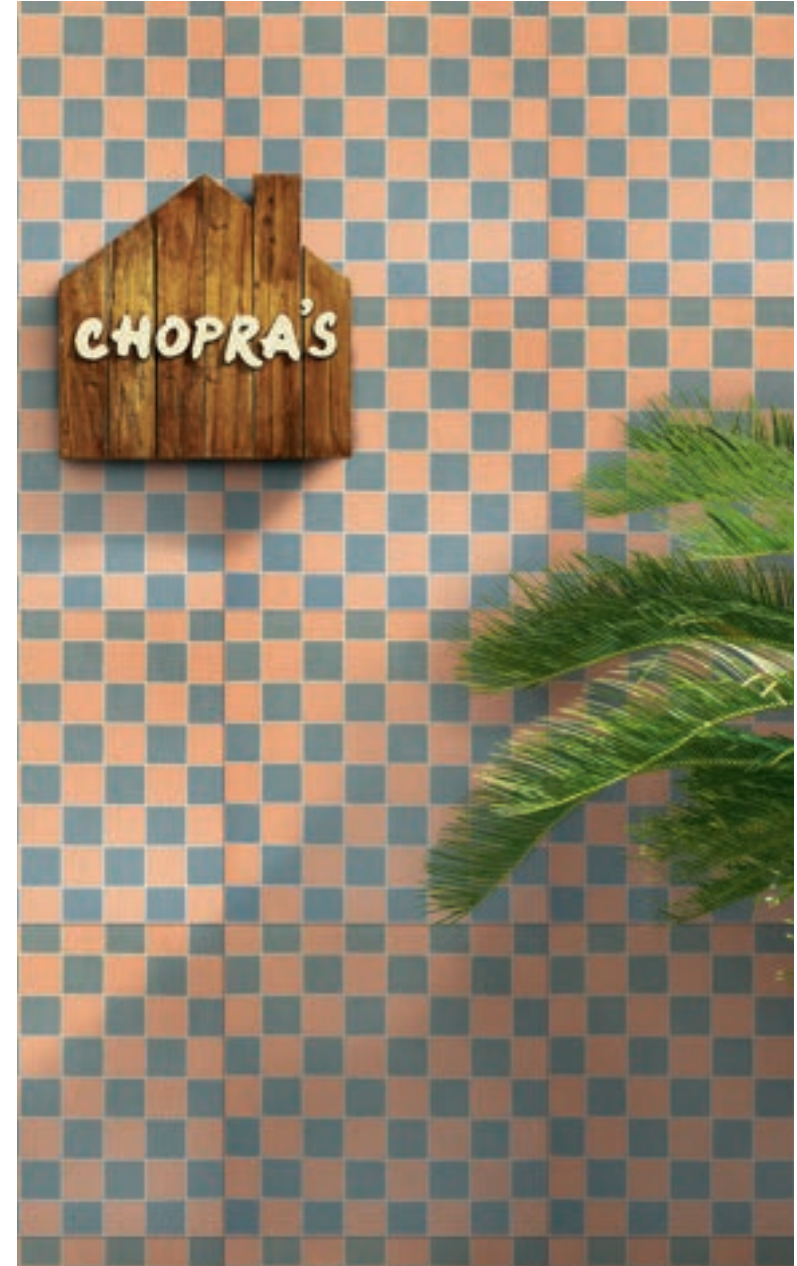
Apex Ultima
Classic Cyan (9230)
Copper (0587)



Apex Ultima
Peach Carnation (8017)
Aquarium Blue (9225)



Apex Ultima
Spinach Soul (7718)
Aquarium Blue (9225)



Createx Dholpur - Quads



Apex Ultima
Basecoat & Groove - Warmstone (0N02)
Topcoat - Red Rust - N (9937)



Creutex Dholpur - Grids



Apex Ultima
Basecoat & Groove - Warmstone (0N02)
Topcoat - Red Rust - N (9937)



Apex Ultima
Basecoat & Groove - Raven Song (8253)
Topcoat - Warmstone (0N02)



Apex Ultima
Basecoat & Groove - Raven Song (8253)
Topcoat - Sleigh Bells (8295)



Apex Ultima
Basecoat & Groove - Raven Song (8253)
Topcoat - Steel Grey (0643)



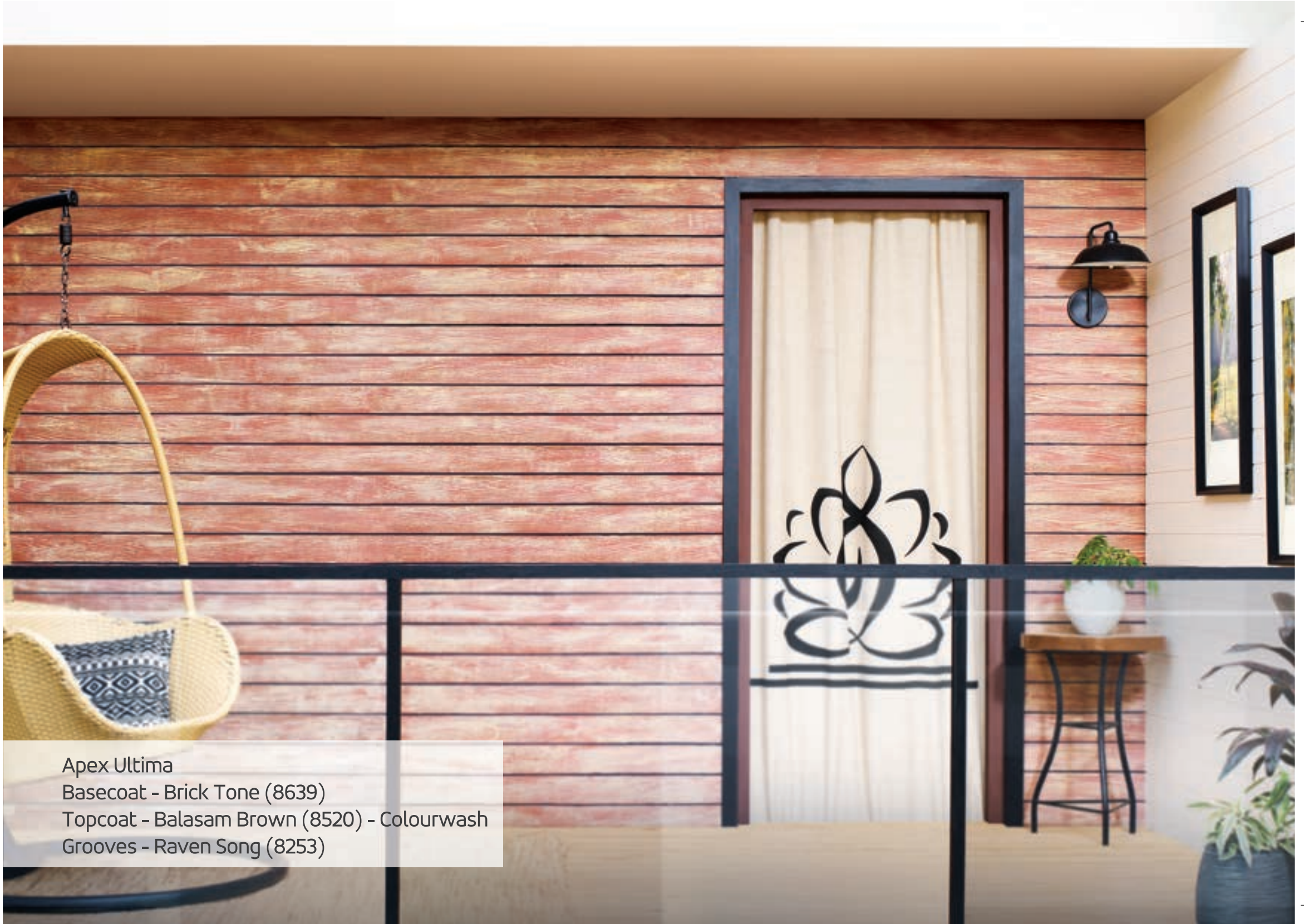


Roller Finish

Apex Createx Roller Finish is a modified acrylic, water-based exterior product specially designed as an intermediary coating. It facilitates excellent adhesion of subsequent coats. It offers a unique texture pattern which has a distinctive appeal.

Choose from a myriad range of vibrant and bold texture patterns to transform your special highlight wall into a real showstopper.

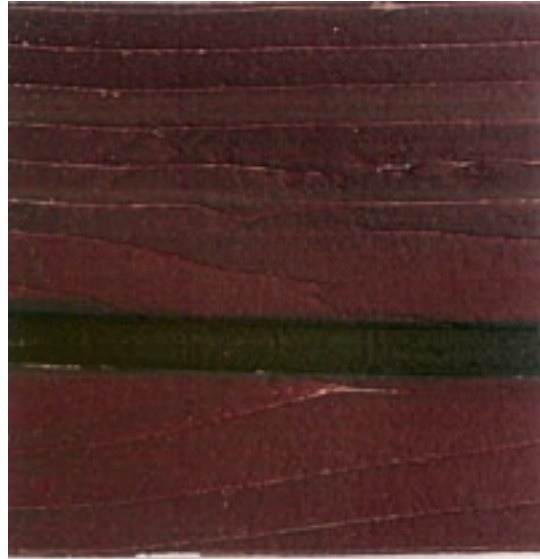
Product Code: 1003



Apex Ultima
Basecoat - Brick Tone (8639)
Topcoat - Balasam Brown (8520) - Colourwash
Grooves - Raven Song (8253)



Apex Ultima
 Basecoat - Brick Tone (8639)
 Topcoat - Balasam Brown (8520) - Colourwash
 Grooves - Raven Song (8253)



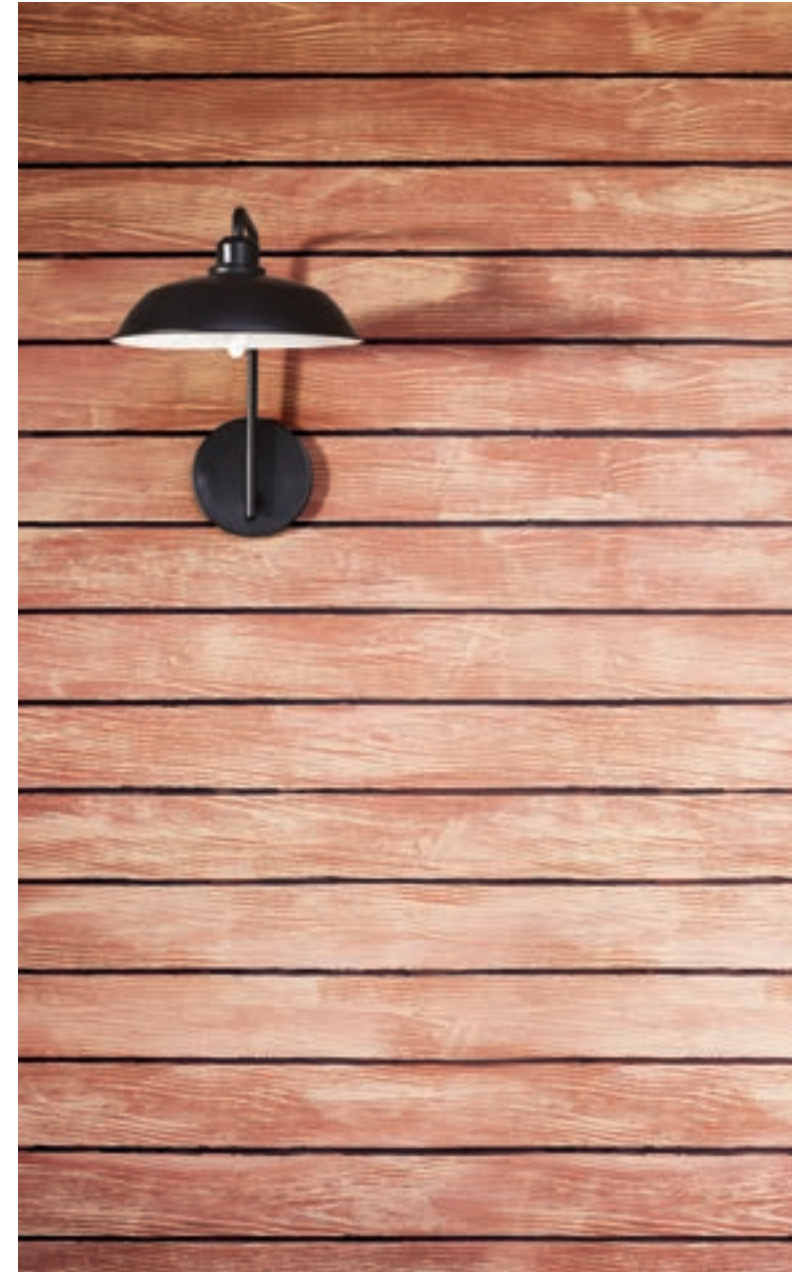
Apex Ultima
 Basecoat - Mahogany (0R05)
 Topcoat - Raven Song (8253) - Colourwash
 Grooves - Raven Song (8253)



Apex Ultima
 Basecoat - Red Rust - N (9937)
 Topcoat - Pinyon Pine - N (9940) - Colourwash
 Grooves - Pinyon Pine - N (9940)



Apex Ultima
 Basecoat - Nut Brown - N (0419)
 Topcoat - Balasam Brown (8520) - Colourwash
 Grooves - Raven Song (8253)



Createx Roller Finish - Woody Pattern



Tile Guard Clear Matt
Topcoat 1 - Sandstone (3211) - Colourwash
Topcoat 2 - Herbal Pack (8602) - Colourwash



Creutex Roller Finish - Diagonal Pattern



Tile Guard Clear Matt
Topcoat 1 - Sandstone (3211) - Colourwash
Topcoat 2 - Herbal Pack (8602) - Colourwash



Tile Guard Clear Matt
Topcoat 1 - Wrought Iron (8439) - Colourwash
Topcoat 2 - Frosted Chocolate (8654) - Colourwash



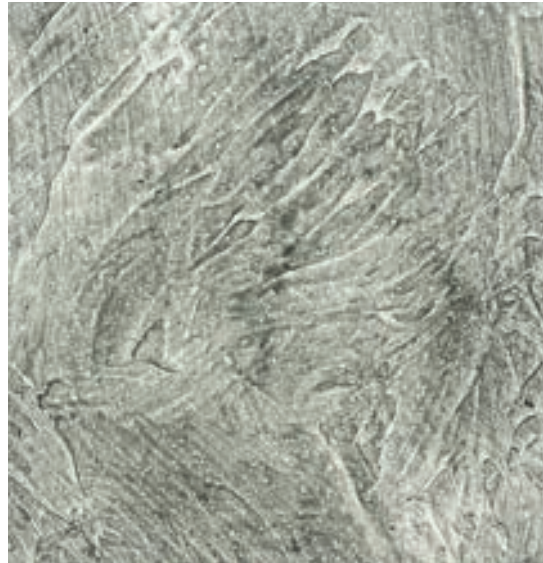
Tile Guard Clear Matt
Topcoat 1 - Rose Meadows (9406) - Colourwash
Topcoat 2 - Frosted Chocolate (8654) - Colourwash



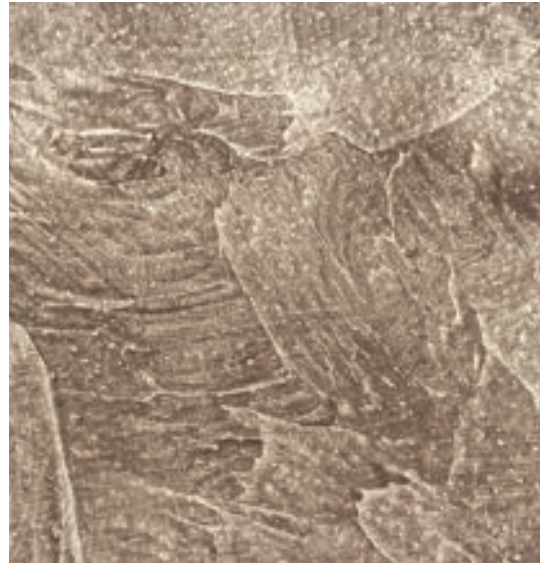
Tile Guard Clear Matt
Topcoat 1 - Runaway Grey (9459) - Colourwash
Topcoat 2 - Platinum Disc (8297) - Colourwash



Tile Guard Clear Matt
Solemn Grey (8302)



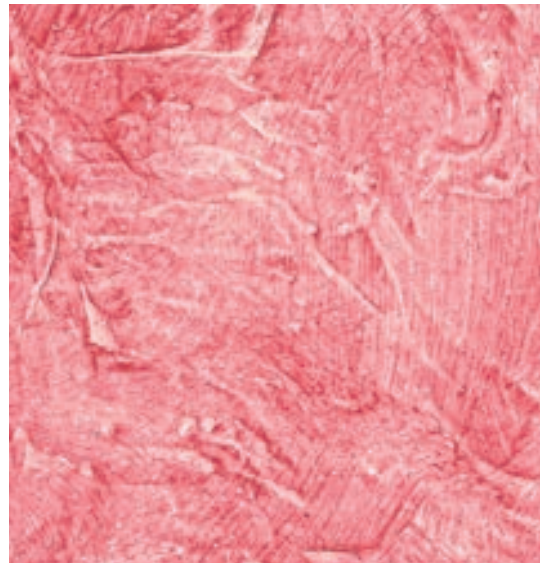
Tile Guard Clear Matt
Solemn Grey (8302)



Tile Guard Clear Matt
Frosted Chocolate (8654)



Tile Guard Clear Matt
Blue Lake (8262)



Tile Guard Clear Matt
Rose Meadows (9406)



Creutex Roller Finish - Waves Pattern



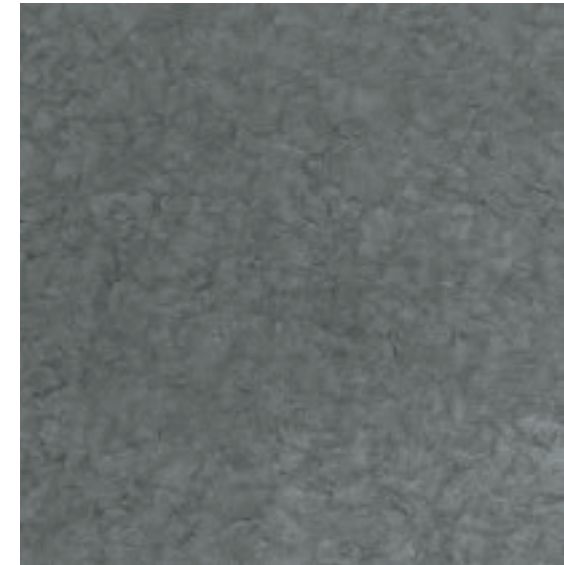
Tile Guard Clear Matt
Frosted Chocolate (8654)



Creutex Roller Finish - Crinkle



Tile Guard Clear Matt
Blue Lake (8262)



Tile Guard Clear Matt
Solemn Grey (8302)



Tile Guard Clear Matt
Frosted Chocolate (8654)



Tile Guard Clear Matt
Rose Meadows (9406)



Apex Ultima
Barley (0572)



Apex Ultima
Warmstone (0N02)



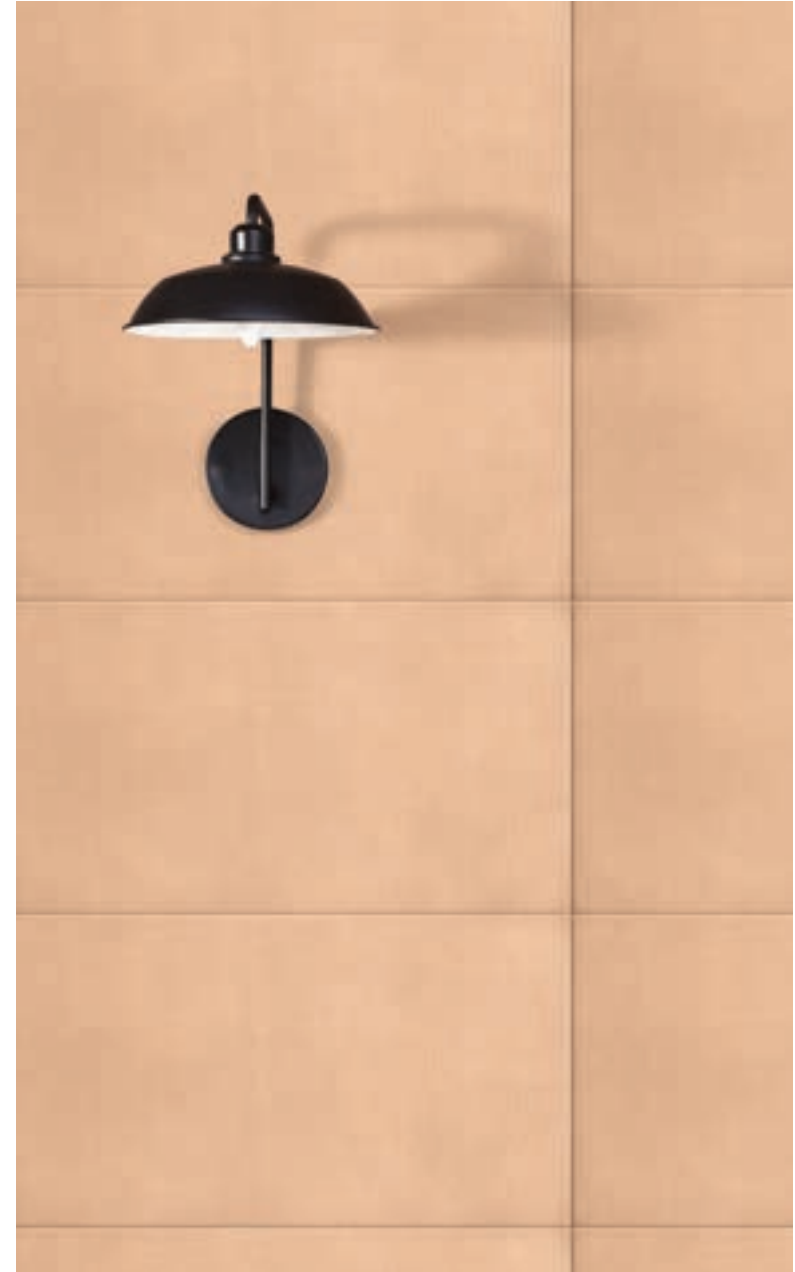
Apex Ultima
Barley (0572)



Apex Ultima
Sleigh Bells (8295)



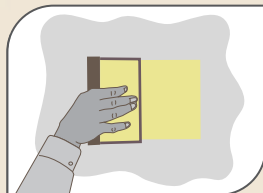
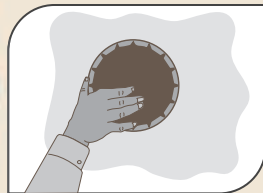
Apex Ultima
Bamboo Green - N (9855)



Createx Roller Finish - Chevron

Apex Createx Scratch Finish

Product Code: 1B53



Apex Createx is a synthetic intermediate finish designed with high quality exterior durable acrylic modified resin and special quality texturing material. With its unique engraved finish Apex Createx offers a wide range of patterns that combine decoration and protection.

DIRECTIONS FOR USE

Clean the surface and repair the surface imperfections with a mixture of white cement and fine sand (ratio 1:3) and allow it to cure. Texture itself can accommodate minor imperfections. Apply Apex Createx by a trowel to obtain a uniform coating of around 1.5-2 mm thickness. Allow it to set for 5-15 min. before creating a pattern.

For Patterns:

Crisscross/Rainfall: For Crisscross pattern, move trowel in horizontal and vertical strokes. For patterns like vertical / swirl / rainfall move the trowel in appropriate direction. Let the texture dry overnight before topcoat application. Apply 2-3 coats of Asian Paints Apex or Apex Ultima by diluting 1 litre with a maximum of 400ml of water.

Swirly Circle: Create swirl pattern as mentioned above. Afterwards, use the lid of 1 L paint and move the grooves at the back of the lid clockwise or anti-clockwise on the texture to create swirls. Apply 2 coats of Apex Ultima dark shade. On top

of that, apply 1 coat of light shade for a dual tone effect.

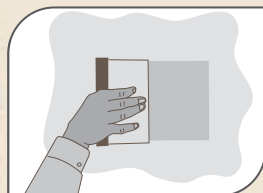
Ocean: Move trowel in clockwise and anti-clockwise direction on the texture to create swirls on wet texture. Move the swirl tool to create clockwise patterns. Apply topcoat as suggested for crisscross pattern.

Slate: Paste masking tape to create the horizontal grooves. Apply 1 coat of texture and create pattern by gently dragging the material in random directions via steel trowel. Gently buff to flatten the edges. Allow it to set for 10 min. and then remove the masking tape. Apply 2 coats of Apex or Apex Ultima basecoat and let it dry. Apply topcoat as colourwash using sponge.

Groovy Woods: Apply 1 coat of texture and create the pattern by dragging edge of fiber trowel horizontally. Merge all the lines and flatten the pattern using the fiber trowel. Let it dry overnight. Apply topcoat as suggested for Swirly Circle.

Apex Createx Dholpur

Product Code: 6711



Asian Paints Apex Createx Dholpur is a synthetic intermediate finish designed with high quality acrylic modified resins for durable exteriors. With its unique stone like resemblance, Apex Createx Dholpur offers a wide range of patterns that combine decoration with protection and imparts a super-premium look to the exterior walls.

DIRECTIONS FOR USE

Clean the surface and repair the surface imperfections with a mixture of white cement and fine sand (ratio 1:3) and allow it to cure. Texture itself can accommodate minor imperfections. Apply Dholpur texture with a trowel or a spatula to obtain coating of around 0.5 - 1 mm thickness. Allow to set it for 4 - 6 hours.

For Patterns:

Brick: Apply 1st coat of Dholpur material using trowel and allow it to dry. Paste masking tape to get the desired brick pattern and apply 2nd coat of texture. Allow to set for 5 - 10 min. and create the pattern by moving the trowel in diagonal manner. Remove the masking tapes and allow it to set overnight. Apply 2-3 coats of Asian Paints Apex or Apex Ultima by diluting 1 litre with a maximum of 400ml of water.

Spray: Apply Createx Dholpur using a texture gun and compressor. Spray the texture uniformly over the surface and allow it to set overnight. Apply topcoat as suggested for Brick Pattern.

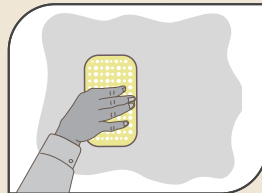
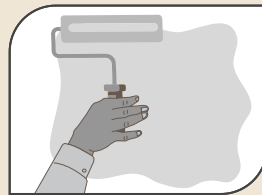
Brushing: Apply 1st coat of Dholpur material using trowel and allow to dry. Apply 2nd coat of texture using trowel and create brush pattern using Royal Play Special Effects brush and allow it to set overnight. Apply topcoat as suggested for brick pattern.

Quads: Apply 1st coat of Dholpur material using trowel and allow it to dry. Paste masking tape in size 1ft*1ft to get the desired boxes and apply 2nd coat of Dholpur. Use Royal Play Antico Metal Comb and create vertical lines on the wet surface. Buff the surface in semi dry condition to get smoother finish. Apply topcoat as suggested for brick pattern.

Grids: Apply 1 coat of Dholpur material using trowel and allow it to dry. Paste masking tape in size 1ft*2ft to get the desired boxes and apply 2nd coat of Dholpur. Use Royal Play Antico Metal Comb and create vertical and horizontal lines alternatively in the boxes. Buff the surface in semi dry condition to get smoother finish. Apply topcoat as suggested for brick pattern.

Apex Createx Roller Finish

Product Code: 1003



Asian Paints Apex Createx Roller Finish is a modified acrylic, water - based exterior product specially designed as an intermediary coating. It facilitates excellent adhesion of subsequent coats. It offers a unique texture pattern which have a distinctive appeal.

DIRECTIONS FOR USE

Clean the surface and repair surface imperfections with Asian Paints TruCare Wall Putty or a mixture of white cement and fine sand (in the ratio of 1:3). For freshly plastered surfaces, apply one coat of Asian Paints TruCare Exterior Wall Primer by thinning 1 litre of each primer and water and allow it to dry. Apply Apex Createx Roller Finish (without diluting) using Honey Comb Open Cell Roller or any other application tool to generate desired patterns and allow to dry for 4 - 6 hours. Apply 2 - 3 coats of Apex or Apex Ultima by diluting 1 litre with maximum 400ml of water.

For Patterns:

Waves: After depositing texture use steel trowel to lightly press on the wall and move the trowel in clockwise direction to create the pattern. Do this for the whole area of application. Let the texture dry for a minimum of 4 hours. Use 1 coat of Tile Guard Clear followed by one or two coats of Tile Guard Tinted. Use sponge to color wash and get a 2 - tone appearance. Add 300ml of water to 1 litre of Apex Tile Guard Clear Matt.

Woody: Once texture is deposited on the substrate, use timber tool to roll

in vertical or horizontal way to create the desired woody pattern. Let the texture dry for a minimum of 4 hours. Apply topcoat, basecoat as done for Slate. Use Ultima in grooves.

Diagonal: Once texture is deposited on the substrate, use steel trowel to lightly press on the wall and move the trowel in diagonal pattern ensuring uniformity in the diagonal lines. Let the texture dry for a minimum of 4 hours. Apply topcoat as suggested above for waves pattern.

Crinkle: After depositing the texture material use steel trowel edge to create spatula like pattern on the entire surface. Once texture is dried use 1 coat of Tile Guard clear followed by 1 or 2 coats of Tile Guard tinted. Use sponge to colour wash and get two tone appearance. Add 300ml of water to 1lit of Tile Guard Clear Matt.

Chevron: After depositing the texture material use Royal Play Antico Metal Comb in horizontal and vertical direction to create zig zag pattern on the wall. Apply 2-3 coats of Asian Paints Apex or Apex Ultima by diluting 1lit with a maximum of 400ml of water.



Createx Scratch Finish Crisscross Pattern
Apex Ultima
Winter Moon (8258)



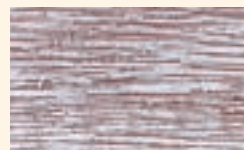
Createx Scratch Finish Rainfall Pattern
Apex Ultima
Frosted Chocolate (8654)



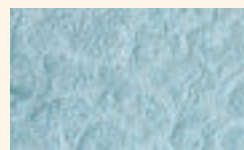
Createx Scratch Finish Swirly Circle Pattern
Apex Ultima
Basecoat - Raven Song (8253)
Topcoat - Indian Copper (M501)



Createx Scratch Finish Slate Pattern
Apex Ultima
Basecoat - Purple Pansy (7182)
Topcoat - Smoke - N (0616) - Colourwash



Createx Scratch Finish Groovy Woods Pattern
Apex Ultima
Basecoat - Nut Brown-N (0419)
Topcoat - Oyster Grey (8473)



Createx Scratch Finish Ocean Pattern
Apex Ultima
Oceans Whisper (7436)



Createx Dholpur Brick Pattern
Apex Ultima
Red Rust - N (9937)



Createx Dholpur Spray Pattern
Apex Ultima
Chinese Tea (7809)



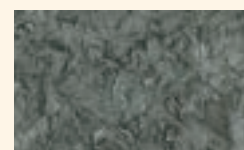
Createx Dholpur Brushing Pattern
Apex Ultima
Tropics (8513)



Createx Roller Finish Diagonal Pattern
Tile Guard Clear Matt
Topcoat 1 - Sandstone (3211) - Colourwash
Topcoat 2 - Herbal Pack (8602) - Colourwash



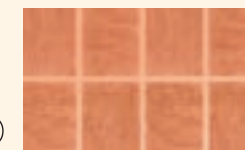
Createx Roller Finish Woody Pattern
Apex Ultima
Basecoat - Brick Tone (8639)
Topcoat - Balasam Brown (8520) - Colourwash
Grooves - Raven Song (8253)



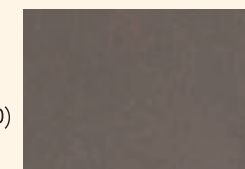
Createx Roller Finish Waves Pattern
Tile Guard Clear Matt
Solemn Grey (8302)



Createx Dholpur Quads
Apex Ultima
Peach Carnation (8017)
Aquarium Blue (9225)



Createx Dholpur Grids
Apex Ultima
BC & Groove - Warmstone (0N02)
TC - Red Rust - N (9937)



Createx Roller Finish Crinkle
Tile Guard Clear Matt
Frosted Chocolate (8654)



Createx Roller Finish Chevron
Apex Ultima
Barley (0572)



1035AP87122 - Apex Createx Book

Manufactured by: LA CONCEPTA, 109 / A, Industrial Area, SK Kuber Compound,
Near V. V. F. Ltd, Sion East, Mumbai 400022.

Marketed by: Asian Paints Ltd., 6A, Shantinagar, Santacruz (E), Mumbai - 400 055

Packed dt: 03/2024

Net Qty: 1 No. Book

For more information, visit our website www.asianpaints.com
For feedback or complaints write to Customer Centricity Manager at
the above mentioned Asian Paints Ltd. address or call 1800-209-5678