

PRODUCT CODE 1A98  
SHADE CODE O818-O853

## Apex Ultima Allura Concordia Granizia

Asian Paints Apex Ultima Allura Concordia Granizia is a grainy textured finish which gives a unique granite appearance making a definite impression to your exteriors. It is water based product.



### PRODUCT BENEFITS

- High DPUR
- High anti algal properties
- Excellent water repellency

When used in conjunction with top Coat Apex Ultima Allura Clara Matt/Sheen, it gives a long lasting warranty for 10years

asianpaints  
**LEAD FREE\* GUARANTEE**

\* All Asian Paints products contain no added Lead, Mercury, Arsenic or Chromium from April 2008.

### PRODUCT FEATURES

#### FINISH

- Coarse
- Medium
- Fine

#### AVAILABLE PACKS



Shelf life: 2 year from date of manufacture in original tightly closed containers away from direct sunlight and excessive heat.

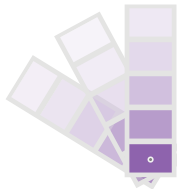
#### COVERAGE



\*\*Actual coverage may vary from the quoted coverage due to factors such as method and condition of application and surface roughness and porosity.

#### COLOURS AVAILABLE

36\*



\*Available in 36 different shades.

#### RECOMMENDED USAGE



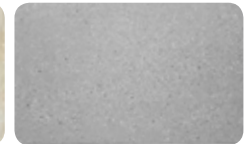
Building facades



New and existing plasters



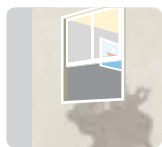
Existing lime plasters



Concrete or pre-fab surfaces

### HOW TO APPLY

#### PRE PAINTING STEPS



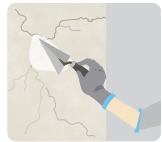
**PLASTER** New masonry surfaces must be allowed to cure completely. It is recommended to allow 28 days as the curing time for new masonry surfaces.



**CLEANING** Surface should be free from any loose paint, dust or grease. Growths of fungus, algae or moss should be removed by wire brushing and water. In case of areas having excessive dampness use Asian Paints SmartCare DampBlock to limit further dampness. When the underlying surface exhibits chalkiness, in spite of thorough surface cleaning, use Asian Paints SmartCare Exterior Sealer.



**FILLING FOR CRACKS** For filling cracks upto 3mm use Asian Paints SmartCare Crack Seal.



**FILLING FOR HOLES & DENTS** In case of dents and holes use Asian Paints Wall Putty or white cement and fine sand in the ratio 1:3

**Apex Ultima Allura Graniza should not be applied on surfaces/ substrates that are subjected to continuous seepage or dampness.**

#### PAINT APPLICATION PROCESS

APPLICATION	PRODUCT CODE	THINNER	DILUTION % (BY VOLUME)	APPLICATION <sup>1</sup> VISCOSITY (SEC)	RECOATING PERIOD <sup>2</sup> (HOURS)
STEP 1 ASIAN PAINTS WALL PUTTY (OPTIONAL)*	0079	WATER	BASED ON REQUIREMENT TO FORM PASTE	PASTE FORM	4 HRS
STEP 2 EXTERIOR WALL PRIMER / PROFESSIONAL EXTERIOR PRIMER BRUSH/SPRAY/ROLLER	0065 1019	WATER	BRUSH 90 - 110 SPRAY 40 - 45 ROLLER 90 - 110	BRUSH 15 - 18 SPRAY 33	4 HRS
HORIZONTAL SURFACES LIKE TOP OF WINDOWS, LEDGES SHOULD BE PAINTED WITH 3 COATS OF APEX ULTIMA FOR GREATER PROTECTION					
APPLICATION OF PRIMER IS MANDATORY					
STEP 3 APEX ULTIMA ALLURA CONCORDIA GRANIZIA AIR-ASSISTED SPRAY GUN	1A98	N/A	NOT RECOMMENDED	N/A	12 - 16 HRS
STEP 4 APEX ULTIMA ALLURA CLARA (BY ROLLER)	1B03	WATER	15-30%	SPRAY 25 - 35	N/A

1. As measured through a Ford cup.  
2. Recoat period is quoted for 25°C and 50% Relative Humidity, these may vary under different conditions.  
3. Some shades may require 3 coats for proper hiding.  
\* Asian Paints Wall Putty is recommended for surfaces with high undulation.

## ADDITIONAL INFORMATION

### VOC CONTENT



Apex Ultima Allura Concordia Granizia meets the LEEDS VOC criteria as per Indian Green Building Council version 1.0 as tested at Shriram Institute for Industrial Research.

### POST PAINTING CARE

For the best performance of the paint, ensure proper washing and cleaning of all algal and fungal growth, if any, at regular intervals of six months.

### TECHNICAL DETAILS

- a. Drying time:** Surface dry time 2 - 4 hrs
- b. Sheen levels:** NA
- c. Flash point IS101/1987 Part 1, Sec 6:** NA
- d. Stability of thinned paint** - To be used within 24 hours

### PRECAUTIONS

- › Do not apply when ambient temperature is less than 5°C or if the temperature might drop to this level within 4 hrs of application.
- › Do not apply during rainfall. If the application has to be done in wet weather, ensure adequate covering of the substrate to keep out of rainfall completely.
- › Use of Universal Stainers or colourants is not recommended.
- › Do not keep material open for a long time.
- › Product cannot be applied on surfaces/substrates that are subjected to continuous seepage or dampness.
- › Ensure a dry, clean substrate for application devoid of salt stains, grime or grease.
- › Mix well before use. (as only Stirring will not be possible).

### SAFETY FEATURES

- › Kindly refer to the MSDS for Apex Ultima Allura Concordia Granizia which gives detailed information on safety measures while handling the paint, which is available on request.
- › Store the container with the lid tightly closed in an upright position, in a cool, dry place
- › Keep out of reach of children and away from eatables.
- › May be harmful if swallowed. In case of ingestion seek immediate medical attention.
- › Wear eye protection during application. In case of contact with eyes, rinse immediately with plenty of water and seek medical advice.
- › In case of skin contact immediately wash skin with soap and plenty of water. Get medical attention if irritation develops or persists.
- › Do not breathe vapour or spray. It is recommended to wear suitable nose pad during sanding and surface preparation to avoid dust inhalation
- › Do not pour leftover paint down the drain or in water courses.
- › In the event of spills, contain spillage using sand or earth.
- › No added Lead, Mercury or Chromium compounds.