

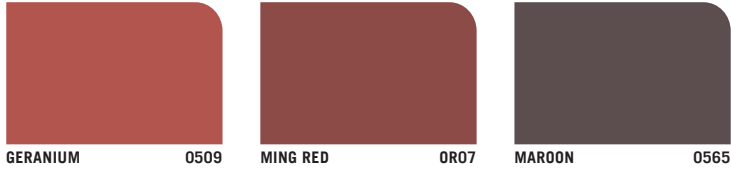


asianpaints

**APEX
TILE GUARD**

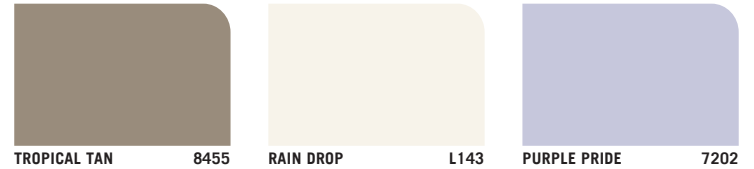
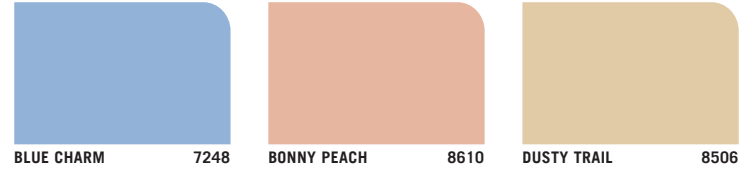
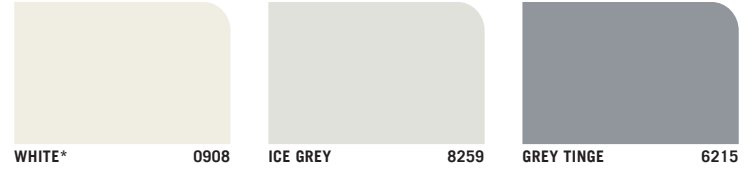
**APEX
FLOOR GUARD**

FLOOR GUARD SHADES



*Shades available in Ultima Floor Guard

FLOOR GUARD SHADES



*Shades available in Ultima Floor Guard

FLOOR GUARD SHADES



MEHENDI-N 2361



DARK DRAMA 7677



CILANTRO 7581



PARAKEET GREEN 0D95



PINE-N 0757



MEADOW PATH 7541



AMAZON MOSS X153



VIVID GREEN 7717



POLISHED BLUE X149



MAGICAL BLUE 0D96



TWILIGHT ZONE 7325



IMPERIAL BLUE 7245



ARMADA 0U29



REVEL 1318



GREY FOLD 0D92



Apex Floor Guard - Gloss Finish



Ultima Floor Guard - High Gloss Finish

*Shades available in Ultima Floor Guard

TILE GUARD SHADES



DOWNING STREET 5945



TERRACOTTA-N* 0427



MING RED 0R07



COPPER 0587



CORAL CANDY 5386



OLD BRICK 8613



MAROON 0565



MOODY MAROON 4181



RENAISSANCE 5952



DARK MIKADO(N) 5396



TERRACOTTA(N) 5693



SUNRISE 5026



GERANIUM 0509



AMBER-N 5103



INDIAN RED 0542



SPL FIRE RED



SPL TERRACOTTA



MAHOGANY

TILE GUARD SHADES



MEADOW PATH 7541



PINE 5557



CILANTRO 7581



PINE-N 0757



DARK DRAMA 7677



AMAZON MOSS X153



DARK GREEN 5395



MEHENDI-N 2361



JEALOUSY 5944



FROSTED GREEN 5418



HEDGE 5438



MEHENDI 5951



POLISHED BLUE X149



VIVID GREEN 7717



SPA 5604



FOREST GREEN



DARK GREEN



SOOTHING SAPPHIRE

TILE GUARD SHADES



MID BUFF 3176



TWILIGHT ZONE 7325



ELECTRIC BLUE 5411



SPL FLAME RED



SAND STONE



KHAKHI



GRAPE BROWN



SPL BROWN



PEACOCK BLUE



OXFORD BLUE 5536



REVEL 1318



ARMADA 0U29



SPL GREY

Tile Guard is also available in clear finish which can be applied over textures and as protective coating and is available in Matt and Sheen variant as depicted below.



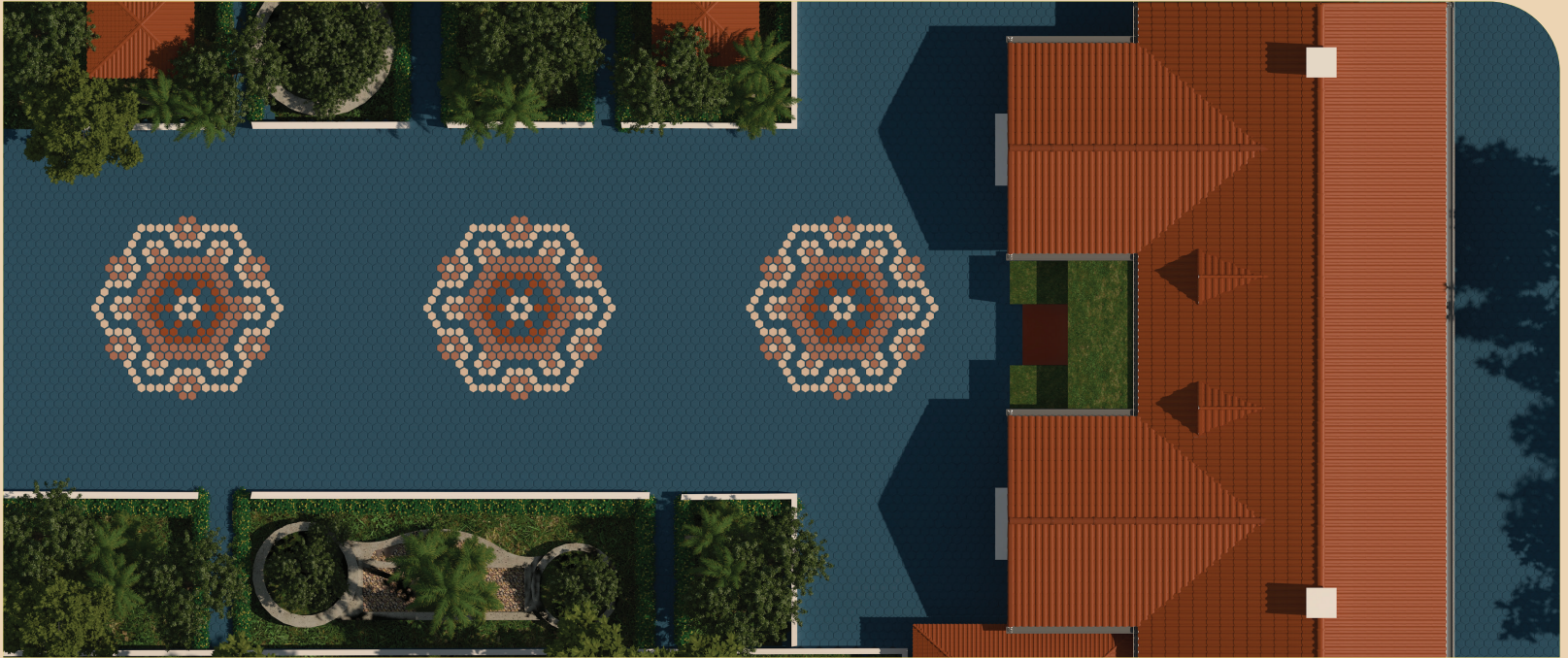
CLEAR SHEEN



CLEAR MATT

FLOOR GUARD

TILE GUARD



APEX
ULTIMA FLOOR GUARD | **APEX FLOOR GUARD**

PU-MODIFIED FLOOR COAT
Toughest Paints For The Floor



APEX TILE GUARD

Ultimate shine,
everlasting shades.



**ABRASION
RESISTANCE**



**SUPERIOR
ADHESION**



**50+ SPECIALIZED
SHADES**

Scan to
know more



**WATER
REPELLENCE**



**ANTI-ALGAL
FORMULA**



**5 YEARS
WARRANTY**

Scan to
know more



FLOORS, REIMAGINED.

A NEW RANGE OF SHADES
FOR YOUR FLOORS



SUNRISE

RAIN DROP



FROSTED GREEN

RAIN DROP

GOLDEN YELLOW



ELECTRIC BLUE

FOREST CANOPY



KHAKHI

HEDGE

RAIN DROP



PEACOCK BLUE

JAIPUR DREAMS

SPL FIRE RED

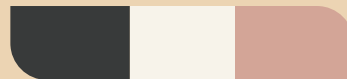
GOLDEN YELLOW



SPL FIRE RED

PEACOCK BLUE

RAIN DROP



BLACK

RAIN DROP

SUNBAKED CLAY



PURPLE PRIDE

GOLDEN YELLOW

SUNRISE

FLOORS, REIMAGINED.

A NEW RANGE OF SHADES
FOR YOUR FLOORS



Scan to download
Inspiration Booklet.



Scan to download
Inspiration Booklet.

DIRECTIONS FOR USE

GET STARTED WITH YOUR PAINTING



CLEANING



1st COAT OF
FLOOR/TILE GUARD



2nd COAT OF
FLOOR/TILE GUARD

DIRECTIONS FOR USE

APEX FLOOR GUARD/ULTIMA FLOOR GUARD

SUBSTRATES:

- Cement blocks
- Cement tiles
- Concrete floors
- Stamped concrete floors

CLEANING: Remove all contaminants such as dirt, grease, oil, dust etc. with soap powder solution using a scrubbing brush.

FRESH PAINTING SURFACE (UNPAINTED): For freshly made concrete surface, allow it to cure for at least 4 weeks before painting.

REPAINTING SURFACE: Check random areas for adhesion of existing paint film. If problems are observed, total removal of old paint is required. Sand smooth and glossy surfaces to improve adhesion.

APPLICATION: Apply 2 coats of Apex Floor Guard by diluting 1000mL of paint with 100-200mL water / Apply 1st coat of Ultima Floor Guard by diluting 1000mL of paint with 0-100mL Mineral Turpentine Oil and 2nd coat without any dilution. DEPENDING ON THE SURFACE, A THIRD COAT OF PAINT MAY BE APPLIED FOR BETTER HIDING.

APEX TILE GUARD

CLEANING: Surface should be free from any loose paint, dust or grease. Growths of fungus, algae or moss should be removed by wire brushing and water.

APPLICATION: Apply 2-3 coats of Apex Tile Guard by diluting 1000mL of paint with 300mL of water.

MAINTENANCE: For the best performance of the paint, ensure proper washing and cleaning of algal and fungal growth at regular interval of six months.