


.....
.....
.....
: : S A B Y A S A C H I : :
.....
..... for
.....
.....
: : n i l a y a : :
.....
.....

furnishings by  asianpaints

Paris-Calcutta
VOLUME III

SABYASACHI



What i design is the result of myriad inspirations – whether it’s fashion or homes. And creating designs for Heartland was like stepping into a familiar world, textured by a variety of experiences, acquisitions, memories and stories that have stayed with me, knowingly and unknowingly: the skillfully painted fabrics that were born along the Coromandel Coast; embroideries from an ancient world; well-remembered motifs and patterns that continue to enchant; old-world Calcutta with its fading luxury; the traditions of miniaturists from colonial-era murshidabad.

The Thar, Makhmal and Soofah collections that comprise Heartland celebrate the beauty of classical motifs reinterpreted and hand painted by artists from the Sabyasachi Art Foundation. They find expression through a reimagining of traditional patterns and a distinctive palette of colours I have evolved over time. These carefully crafted fabrics can transform spaces and perhaps your perspective as well. The patterns, designs and motifs that make up the fabric collections of Heartland is an endeavour to make this journey of transformation uncommon and unforgettable – as it should be.

After all, at the heart of every home is the story of the people who Inhabit it, make it and shape it just the way they like it. Layer it with well-loved elements and their distinct styles. Heartland, i hope, serves as a reminder of the beauty that still remains, and endures, in an uncertain world.



Paris-Calcutta

Volume III



NLF24HIR005



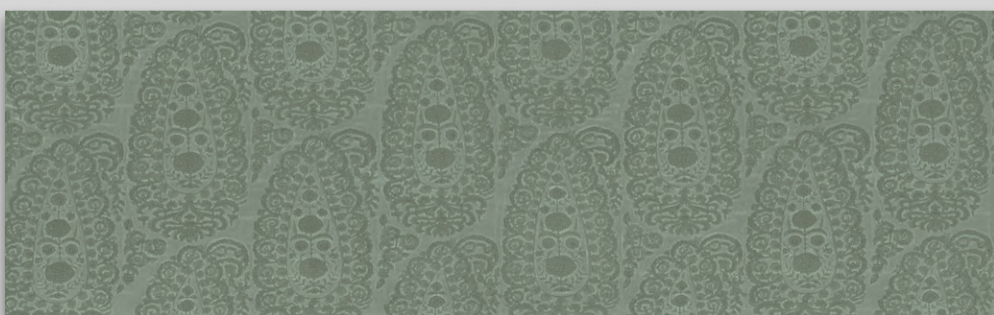
NLF24HIR001



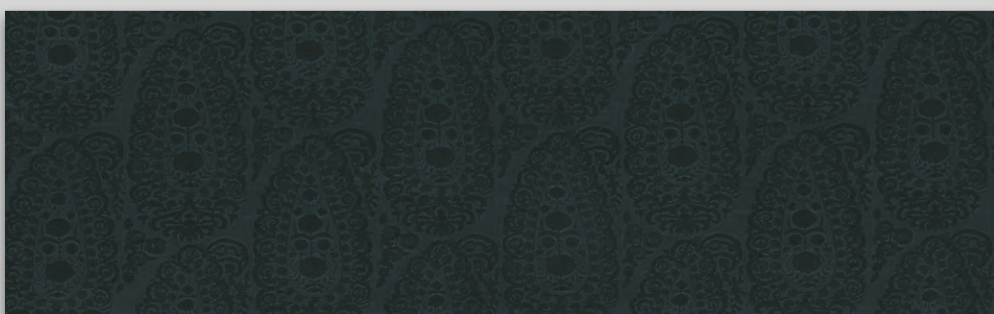
NLF24HIR003



NLF24HIR002



NLF24JAE001



NLF24JAE004





NLF24JAE003



NLF24JAE002



NLF24JAJ001



NLF24JAP003



NLF24JAP001



NLF24JAP002





NLF24JAP004



NLF24CHO002



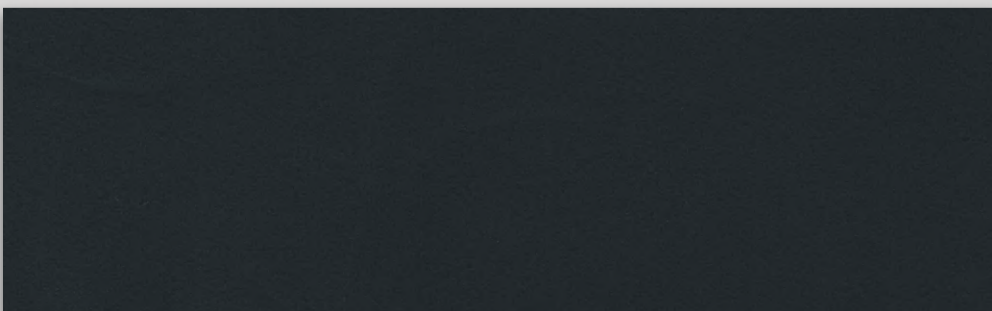
NLF24CHO001



NLF24CHO005



NLF24CHO003



NLF24CHO004





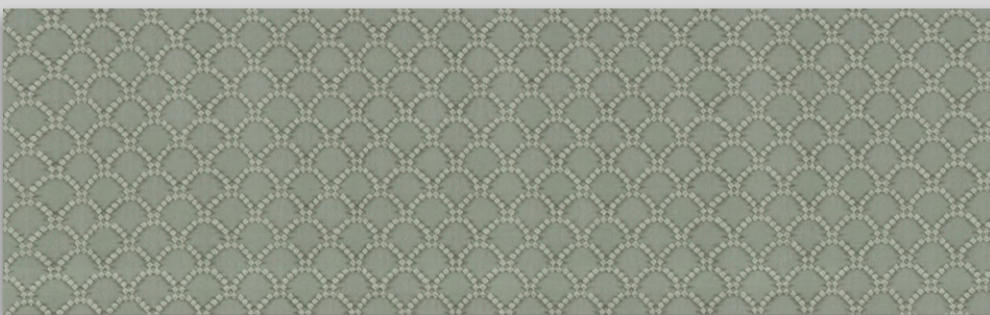
NLF24CHO006



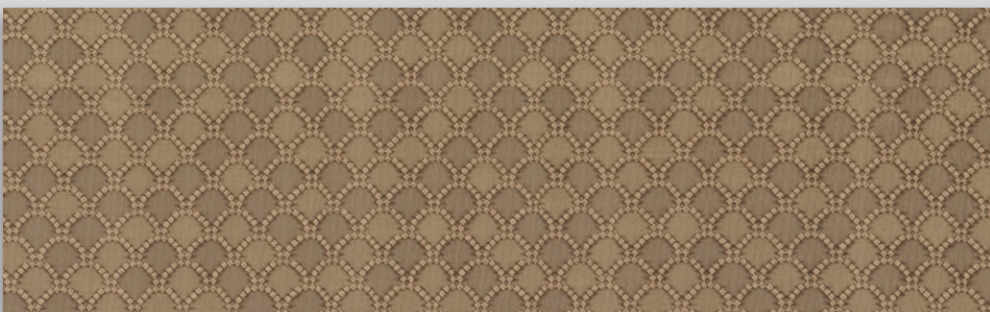
NLF24GAV001



NLF24GAL001



NLF24SEY002



NLF24SEY001



NLF24PSE002





NLF24PSE001



NLF24PSP002



NLF24PSP003



NLF24PSP004



NLF24AMO004





HIRANBAGH

NLF24HIR005



GSM	MARTINDALE	COMPOSITION	V. REPEAT (CM)	H. REPEAT (CM)
240	4000	100% LI	67	69.2

Back



HIRANBAGH

NLF24HIR001



GSM	MARTINDALE	COMPOSITION	V. REPEAT (CM)	H. REPEAT (CM)
240	4000	100% LI	67	69.2

Back



HIRANBAGH

NLF24HIR003



GSM	MARTINDALE	COMPOSITION	V. REPEAT (CM)	H. REPEAT (CM)
240	4000	100% LI	67	69.2

[Back](#)



HIRANBAGH

NLF24HIR002



GSM	MARTINDALE	COMPOSITION	V. REPEAT (CM)	H. REPEAT (CM)
240	4000	100% LI	67	69.2

Back



JAMSHED JAMAVAR VELVET

NLF24JAE001



GSM	MARTINDALE	COMPOSITION	V. REPEAT (CM)	H. REPEAT (CM)
960	40000	54% CO, 46% VI	32.2	31.8

[Back](#)



JAMSHED JAMAVAR VELVET

NLF24JAE004



GSM	MARTINDALE	COMPOSITION	V. REPEAT (CM)	H. REPEAT (CM)
960	40000	54% CO, 46% VI	32.2	31.8

[Back](#)



JAMSHED JAMAVAR VELVET

NLF24JAE003



GSM	MARTINDALE	COMPOSITION	V. REPEAT (CM)	H. REPEAT (CM)
960	40000	54% CO, 46% VI	32.2	31.8

[Back](#)



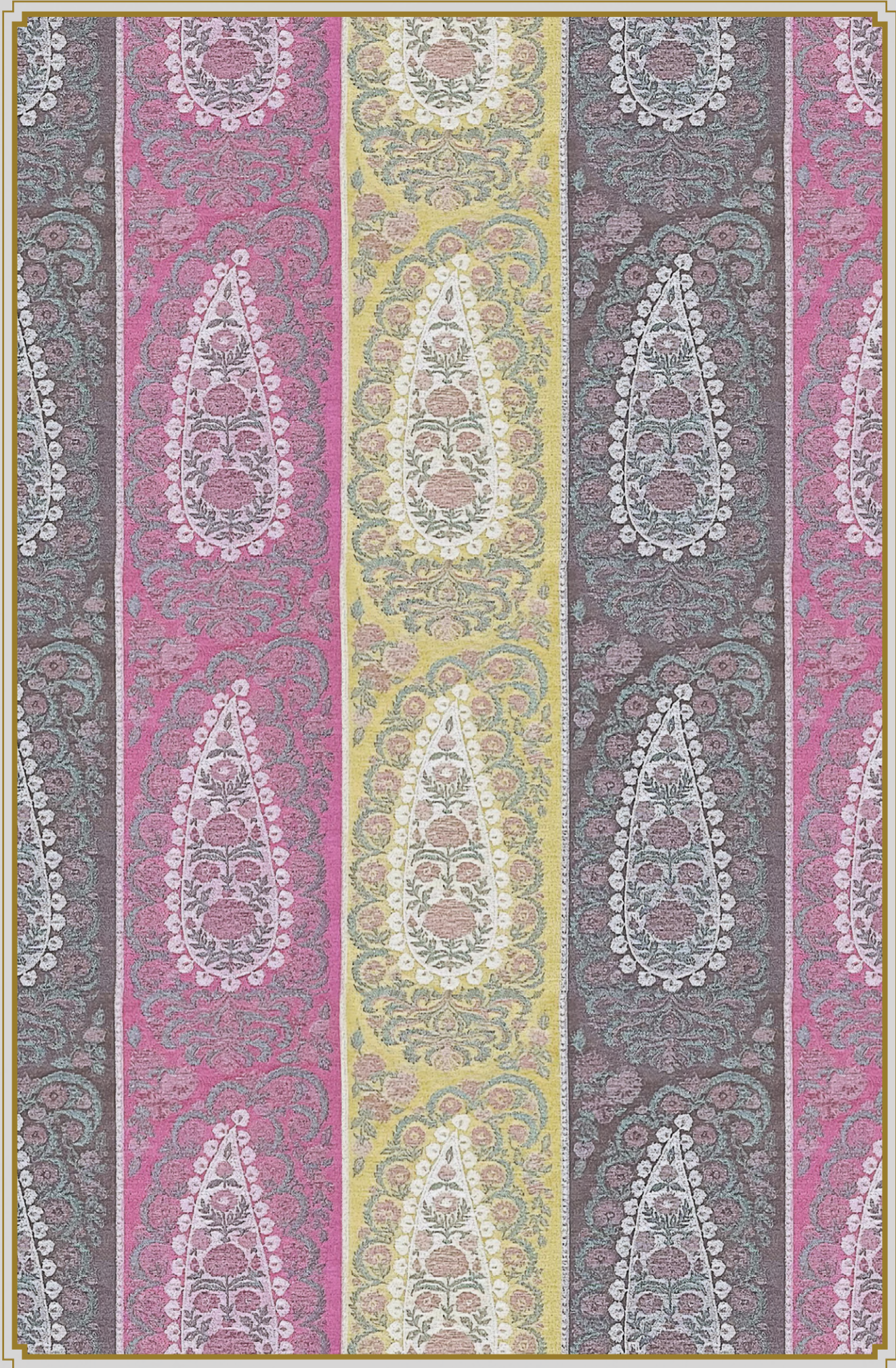
JAMSHED JAMAVAR VELVET

NLF24JAE002



GSM	MARTINDALE	COMPOSITION	V. REPEAT (CM)	H. REPEAT (CM)
960	40000	54% CO, 46% VI	32.2	31.8

[Back](#)



JAMSHED JAMAVAR STRIPE WEAVE

NLF24JAJ001



GSM	MARTINDALE	COMPOSITION	V. REPEAT (CM)	H. REPEAT (CM)
402	100000	38% PA, 29% VI, 27% LI, 6% PL	30.5	47.5

[Back](#)



JAMSHED JAMAVAR STRIPE

NLF24JAP003



GSM	MARTINDALE	COMPOSITION	V. REPEAT (CM)	H. REPEAT (CM)
380	8000	100% LI	22.6	70.2

[Back](#)



JAMSHED JAMAVAR STRIPE

NLF24JAP001



GSM	MARTINDALE	COMPOSITION	V. REPEAT (CM)	H. REPEAT (CM)
380	8000	100% LI	22.6	70.2

[Back](#)



JAMSHED JAMAVAR STRIPE

NLF24JAP002



GSM	MARTINDALE	COMPOSITION	V. REPEAT (CM)	H. REPEAT (CM)
380	8000	100% LI	22.6	70.2

[Back](#)



JAMSHED JAMAVAR STRIPE

NLF24JAP004



GSM	MARTINDALE	COMPOSITION	V. REPEAT (CM)	H. REPEAT (CM)
380	8000	100% LI	22.6	70.2

[Back](#)



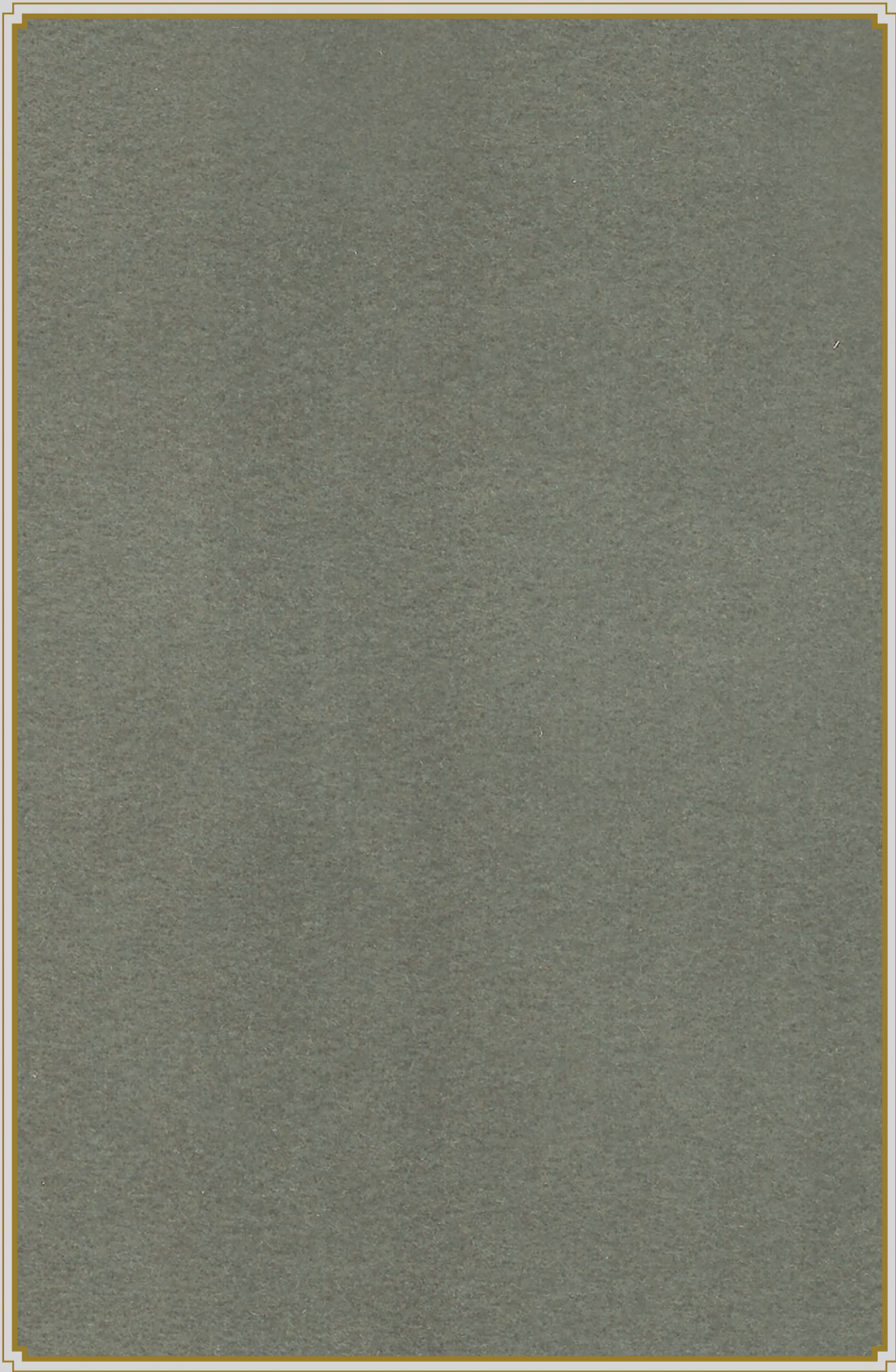
CHOWRINGHEE

NLF24CHO002



GSM	MARTINDALE	COMPOSITION	V. REPEAT (CM)	H. REPEAT (CM)
520	100000	100% CO	N/A	N/A

[Back](#)



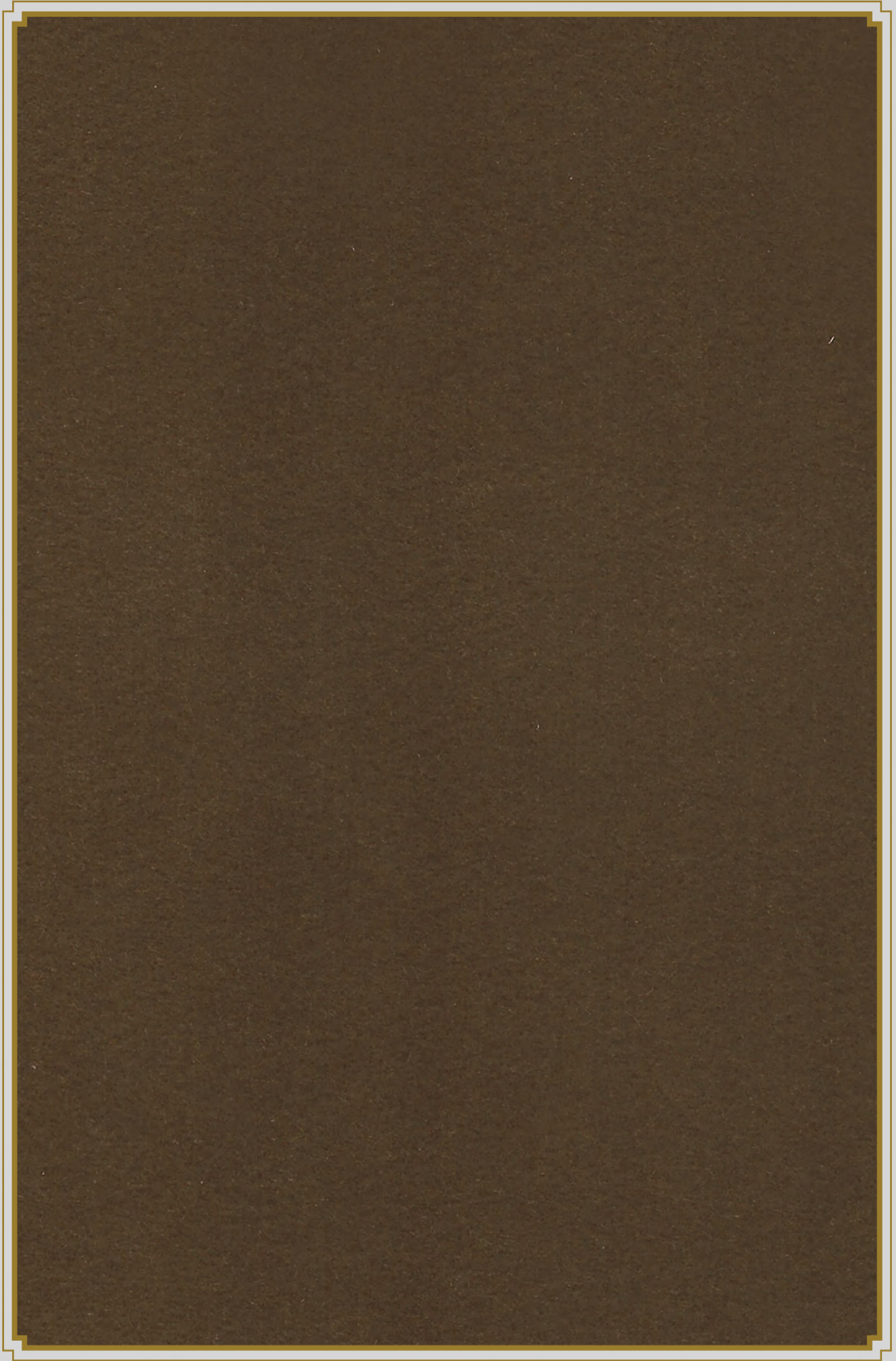
CHOWRINGHEE

NLF24CHO001



GSM	MARTINDALE	COMPOSITION	V. REPEAT (CM)	H. REPEAT (CM)
520	100000	100% CO	N/A	N/A

[Back](#)



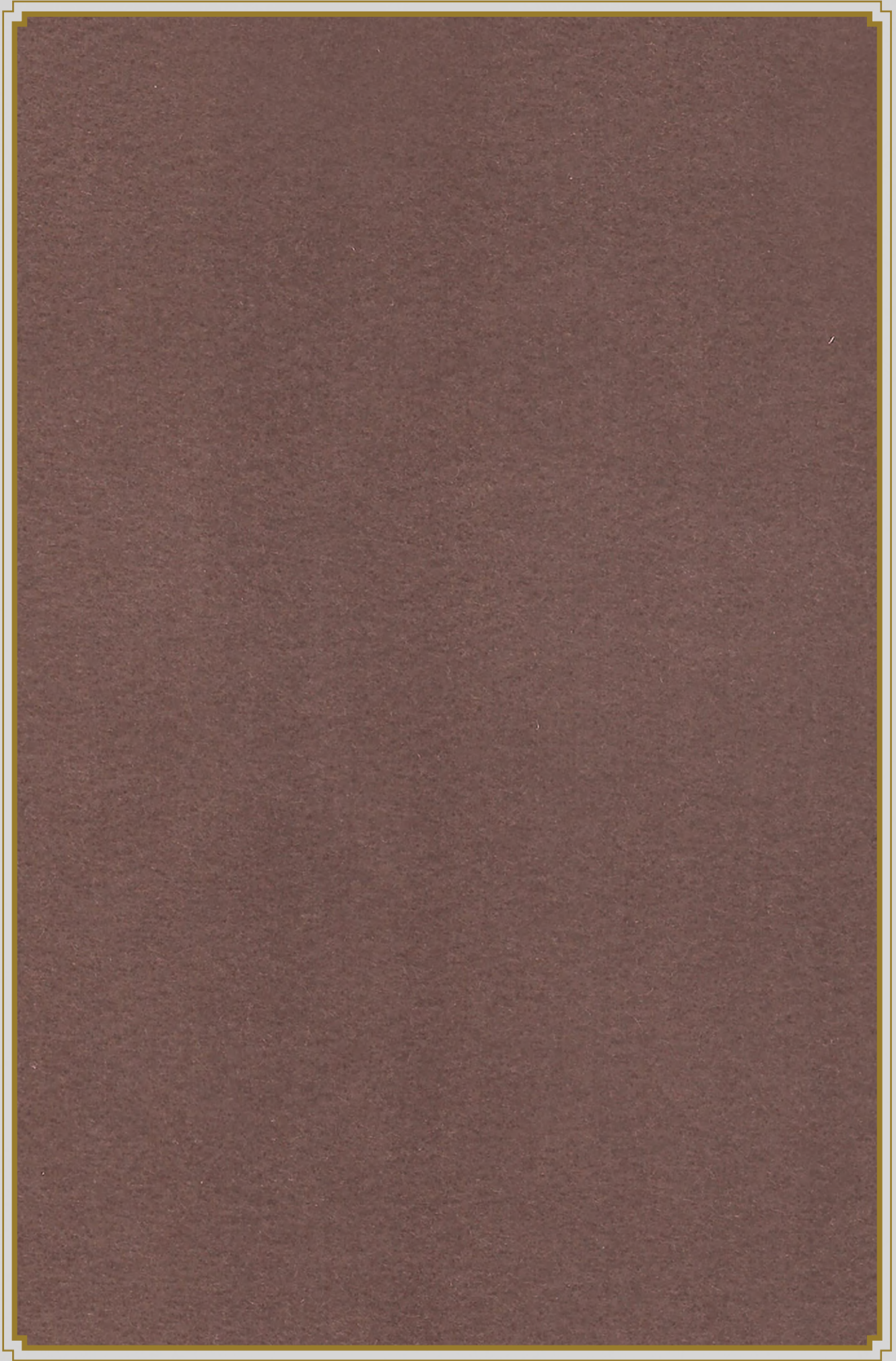
CHOWRINGHEE

NLF24CHO005



GSM	MARTINDALE	COMPOSITION	V. REPEAT (CM)	H. REPEAT (CM)
520	100000	100% CO	N/A	N/A

[Back](#)



CHOWRINGHEE

NLF24CHO003



GSM	MARTINDALE	COMPOSITION	V. REPEAT (CM)	H. REPEAT (CM)
520	100000	100% CO	N/A	N/A

[Back](#)



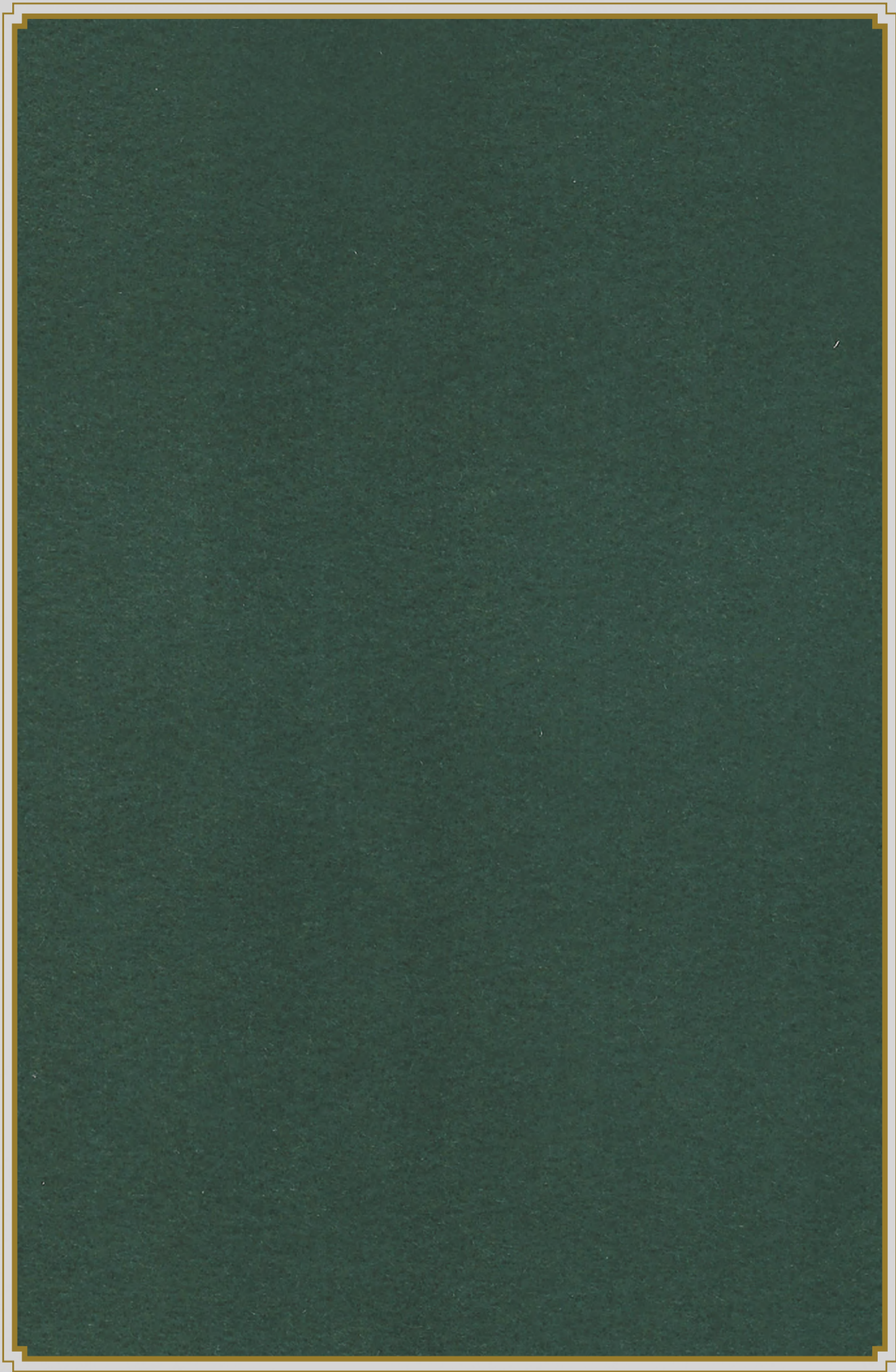
CHOWRINGHEE

NLF24CHO004



GSM	MARTINDALE	COMPOSITION	V. REPEAT (CM)	H. REPEAT (CM)
520	100000	100% CO	N/A	N/A

[Back](#)



CHOWRINGHEE

NLF24CHO006



GSM	MARTINDALE	COMPOSITION	V. REPEAT (CM)	H. REPEAT (CM)
520	100000	100% CO	N/A	N/A

[Back](#)



GALECHA

NLF24GAV001



GSM	MARTINDALE	COMPOSITION	V. REPEAT (CM)	H. REPEAT (CM)
520	100000	100% CO	64	68.5

[Back](#)



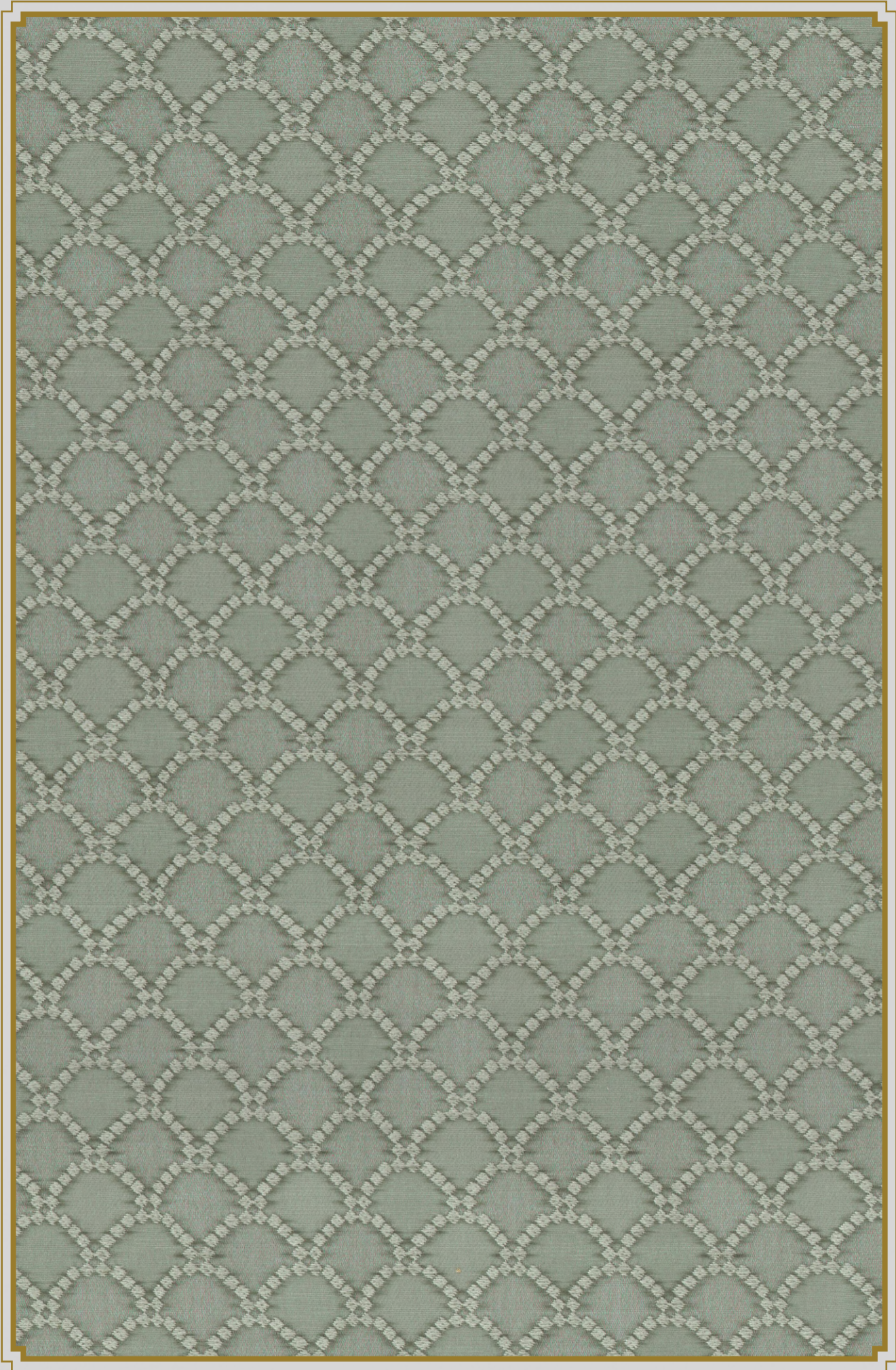
GALECHA

NLF24GAL001



GSM	MARTINDALE	COMPOSITION	V. REPEAT (CM)	H. REPEAT (CM)
380	11000	100% LI	64.3	69.5

[Back](#)



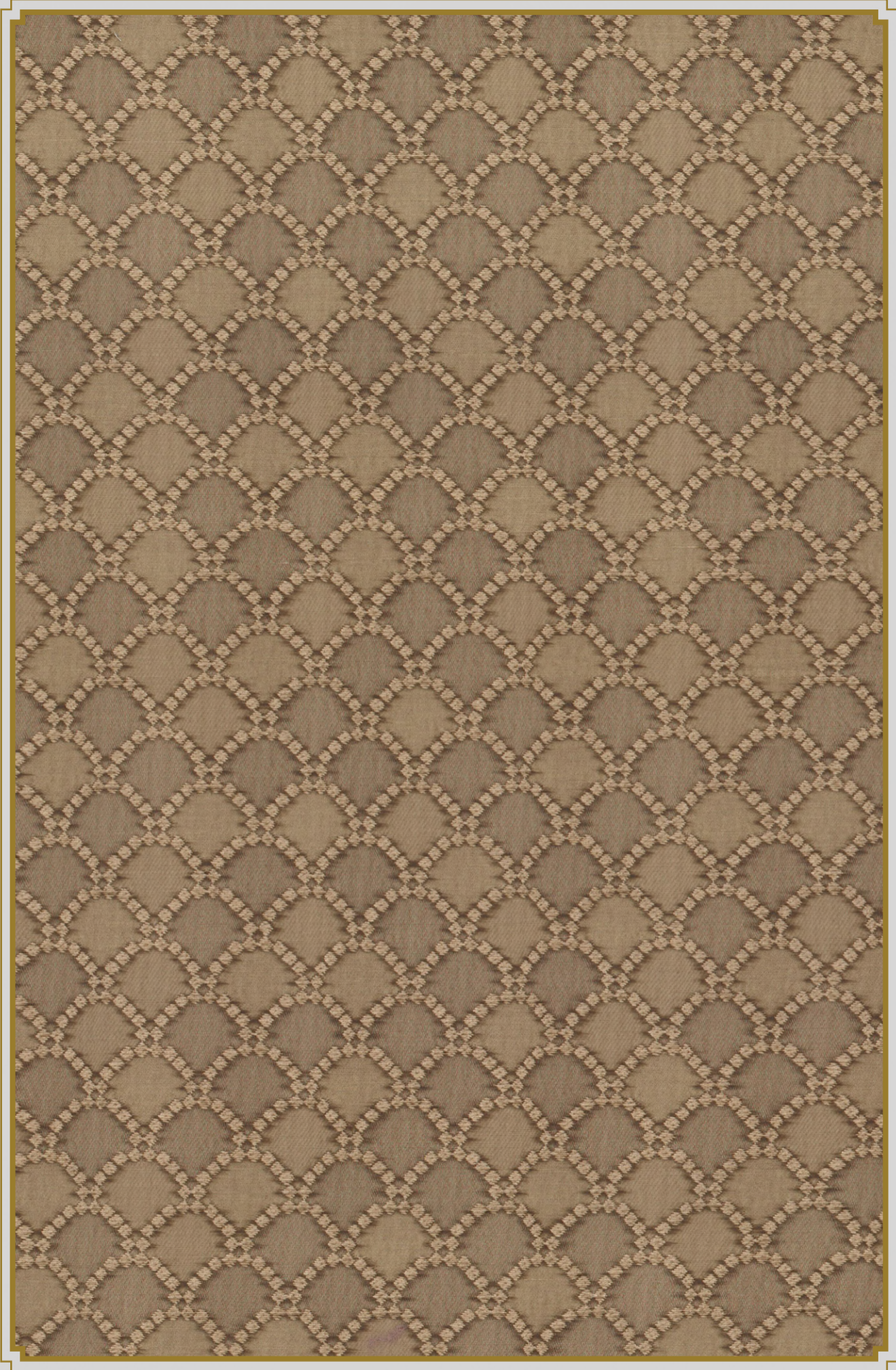
SEYLAN

NLF24SEY002



GSM	MARTINDALE	COMPOSITION	V. REPEAT (CM)	H. REPEAT (CM)
625	51000	85% PL, 9% LI, 6% CO	24.5	24.1

[Back](#)



SEYLAN

NLF24SEY001



GSM	MARTINDALE	COMPOSITION	V. REPEAT (CM)	H. REPEAT (CM)
625	51000	85% PL, 9% LI, 6% CO	24.5	24.1

[Back](#)



PERSIAN SANCTUARY EMBROIDERY

NLF24PSE002



GSM	MARTINDALE	COMPOSITION	V. REPEAT (CM)	H. REPEAT (CM)
500	N/A	72% VI, 17% LI, 8% CO, 3% ZA	46.8	45.5

[Back](#)



PERSIAN SANCTUARY EMBROIDERY

NLF24PSE001



GSM	MARTINDALE	COMPOSITION	V. REPEAT (CM)	H. REPEAT (CM)
500	N/A	72% VI, 17% LI, 8% CO, 3% ZA	46.8	45.5

Back



PERSIAN SANCTUARY

NLF24PSP002



GSM	MARTINDALE	COMPOSITION	V. REPEAT (CM)	H. REPEAT (CM)
220	19000	100% LI	45	35.3

[Back](#)



PERSIAN SANCTUARY

NLF24PSP003



GSM	MARTINDALE	COMPOSITION	V. REPEAT (CM)	H. REPEAT (CM)
220	19000	100% LI	45	35.3

[Back](#)



PERSIAN SANCTUARY

NLF24PSP004



GSM	MARTINDALE	COMPOSITION	V. REPEAT (CM)	H. REPEAT (CM)
220	19000	100% LI	45	35.3

Back



AMOUREUX EMBROIDERY

NLF24AMO004



GSM	MARTINDALE	COMPOSITION	V. REPEAT (CM)	H. REPEAT (CM)
370	N/A	76% LI, 19% VI, 5% ZA	15.7	33.5

[Back](#)

DESIGN	MARTINDALE	WASH CARE	WIDTH	COMPOSITION
HIRANBAGH	4000		139	100% LI
HIRANBAGH	4000		139	100% LI
HIRANBAGH	4000		139	100% LI
HIRANBAGH	4000		139	100% LI
JAMSHED JAMAVAR VELVET	40000		128	54% CO, 46% VI
JAMSHED JAMAVAR VELVET	40000		128	54% CO, 46% VI
JAMSHED JAMAVAR VELVET	40000		128	54% CO, 46% VI
JAMSHED JAMAVAR VELVET	40000		128	54% CO, 46% VI
JAMSHED JAMAVAR STRIPE WEAVE	100000		142	38% PA, 29% VI, 27% LI, 6% PL
JAMSHED JAMAVAR STRIPE	8000		140	100% LI
JAMSHED JAMAVAR STRIPE	8000		140	100% LI
JAMSHED JAMAVAR STRIPE	8000		140	100% LI
JAMSHED JAMAVAR STRIPE	8000		140	100% LI
CHOWRINGHEE	100000		141	100% CO
CHOWRINGHEE	100000		141	100% CO

DESIGN	MARTINDALE	WASH CARE	WIDTH	COMPOSITION
CHOWRINGHEE	100000		141	100% CO
CHOWRINGHEE	100000		141	100% CO
CHOWRINGHEE	100000		141	100% CO
CHOWRINGHEE	100000		141	100% CO
GALECHA	100000		137	100% CO
GALECHA	11000		139	100% LI
SEYLAN	51000		144	85% PL, 9% LI, 6% CO
SEYLAN	51000		144	85% PL, 9% LI, 6% CO
PERSIAN SANCTUARY EMBROIDERY	N/A		138	72% VI, 17% LI, 8% CO, 3% ZA
PERSIAN SANCTUARY EMBROIDERY	N/A		138	72% VI, 17% LI, 8% CO, 3% ZA
PERSIAN SANCTUARY	19000		141	100% LI
PERSIAN SANCTUARY	19000		141	100% LI
PERSIAN SANCTUARY	19000		141	100% LI
AMOUREUX EMBROIDERY	N/A		134	76% LI, 19% VI, 5% ZA