


.....
.....
.....
: : SABYASACHI : :
.....
..... for
.....
.....
: : nilaya : :
.....
.....

furnishings by  asianpaints

Paris-Calcutta
VOLUME II

SABYASACHI



What i design is the result of myriad inspirations – whether it’s fashion or homes. And creating designs for Heartland was like stepping into a familiar world, textured by a variety of experiences, acquisitions, memories and stories that have stayed with me, knowingly and unknowingly: the skillfully painted fabrics that were born along the Coromandel Coast; embroideries from an ancient world; well-remembered motifs and patterns that continue to enchant; old-world Calcutta with its fading luxury; the traditions of miniaturists from colonial-era murshidabad.

The Thar, Makhmal and Soofah collections that comprise Heartland celebrate the beauty of classical motifs reinterpreted and hand painted by artists from the Sabyasachi Art Foundation. They find expression through a reimagining of traditional patterns and a distinctive palette of colours I have evolved over time. These carefully crafted fabrics can transform spaces and perhaps your perspective as well. The patterns, designs and motifs that make up the fabric collections of Heartland is an endeavour to make this journey of transformation uncommon and unforgettable – as it should be.

After all, at the heart of every home is the story of the people who Inhabit it, make it and shape it just the way they like it. Layer it with well-loved elements and their distinct styles. Heartland, i hope, serves as a reminder of the beauty that still remains, and endures, in an uncertain world.



Paris-Calcutta

Volume II



NLF24VIN003



NLF24TOL010



NLF24FEZ004



NLF24NAR001



NLF24MAD003



NLF24FEW002





NLF24MIT002



NLF24TOL007



NLF24TOL004



NLF24ANA001



NLF24ABE001



NLF24NAP003





NLF24MIT001



NLF24NAP002



NLF24ABE002



NLF24MAD001



NLF24FEZ003



NLF24NAR003





NLF24ABE003



NLF24FEW001



NLF24FEZ002



NLF24ANA002



NLF24TOL005



NLF24TOL008





NLF24VIN002



NLF24NAR002



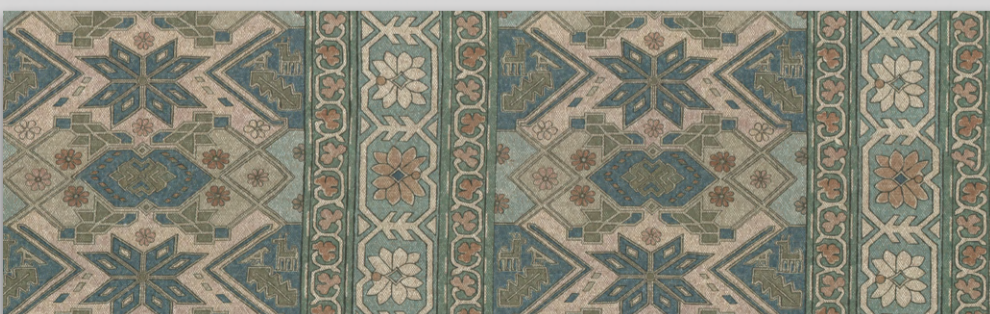
NLF24NAP004



NLF24FEZ001



NLF24FEW003



NLF24VIN001





NLF24NAP001



NLF24TOL006



NLF24MAD002





VINTAGE KILIM

NLF24VIN003



GSM	MARTINDALE	COMPOSITION	V. REPEAT (CM)	H. REPEAT (CM)
760	10000	45% LI, 33% JU, 22% CO	29	71

[Back](#)



TOLLYGUNGE

NLF24TOL010



GSM	MARTINDALE	COMPOSITION	V. REPEAT (CM)	H. REPEAT (CM)
518	66000	51% VI, 32% CO, 16% PA, 1% PL	N/A	N/A

[Back](#)



FEZ

NLF24FEZ004



GSM	MARTINDALE	COMPOSITION	V. REPEAT (CM)	H. REPEAT (CM)
380	11000	100% LI	30.2	46.2

Back



NARGIS

NLF24NAR001



GSM	MARTINDALE	COMPOSITION	V. REPEAT (CM)	H. REPEAT (CM)
220	8000	100% LI	19.5	27.6

[Back](#)



MADURA

NLF24MAD003



GSM	MARTINDALE	COMPOSITION	V. REPEAT (CM)	H. REPEAT (CM)
518	78000	59% CO, 17% VI, 12% LI, 12% PL	0	48.5

[Back](#)



FEZ WEAVE

NLF24FEW002



GSM	MARTINDALE	COMPOSITION	V. REPEAT (CM)	H. REPEAT (CM)
655	40000	55% CO, 28% VI, 17% WL	28.8	68.5

[Back](#)



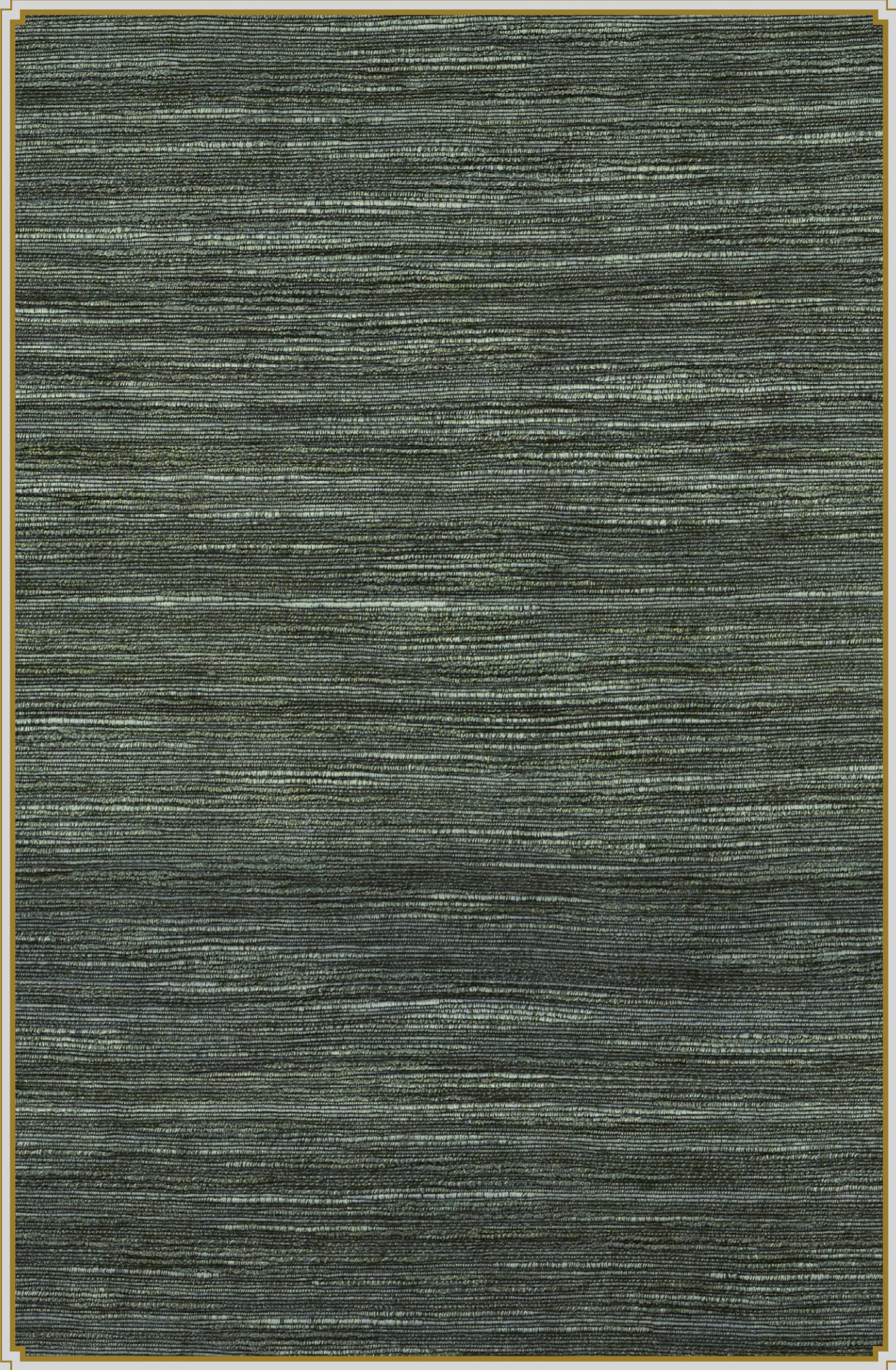
MITHU

NLF24MIT002



GSM	MARTINDALE	COMPOSITION	V. REPEAT (CM)	H. REPEAT (CM)
380	8000	100% LI	28.2	46.2

Back



TOLLYGUNGE

NLF24TOL007



GSM	MARTINDALE	COMPOSITION	V. REPEAT (CM)	H. REPEAT (CM)
518	66000	51% VI, 32% CO, 16% PA, 1% PL	N/A	N/A

[Back](#)



TOLLYGUNGE

NLF24TOL004



GSM	MARTINDALE	COMPOSITION	V. REPEAT (CM)	H. REPEAT (CM)
518	66000	51% VI, 32% CO, 16% PA, 1% PL	N/A	N/A

[Back](#)



ANARDANA

NLF24ANA001



GSM	MARTINDALE	COMPOSITION	V. REPEAT (CM)	H. REPEAT (CM)
265	11000	100% LI	69	69.7

[Back](#)



ANARDANA BLOSSOM EMBROIDERY

NLF24ABE001



GSM	MARTINDALE	COMPOSITION	V. REPEAT (CM)	H. REPEAT (CM)
460	N/A	60% LI, 40% VI	23	33.7

[Back](#)



NAPOLEON STRIPE

NLF24NAP003



GSM	MARTINDALE	COMPOSITION	V. REPEAT (CM)	H. REPEAT (CM)
530	30000	45% VI, 35% PL, 20% LI	STRIPE	10

[Back](#)



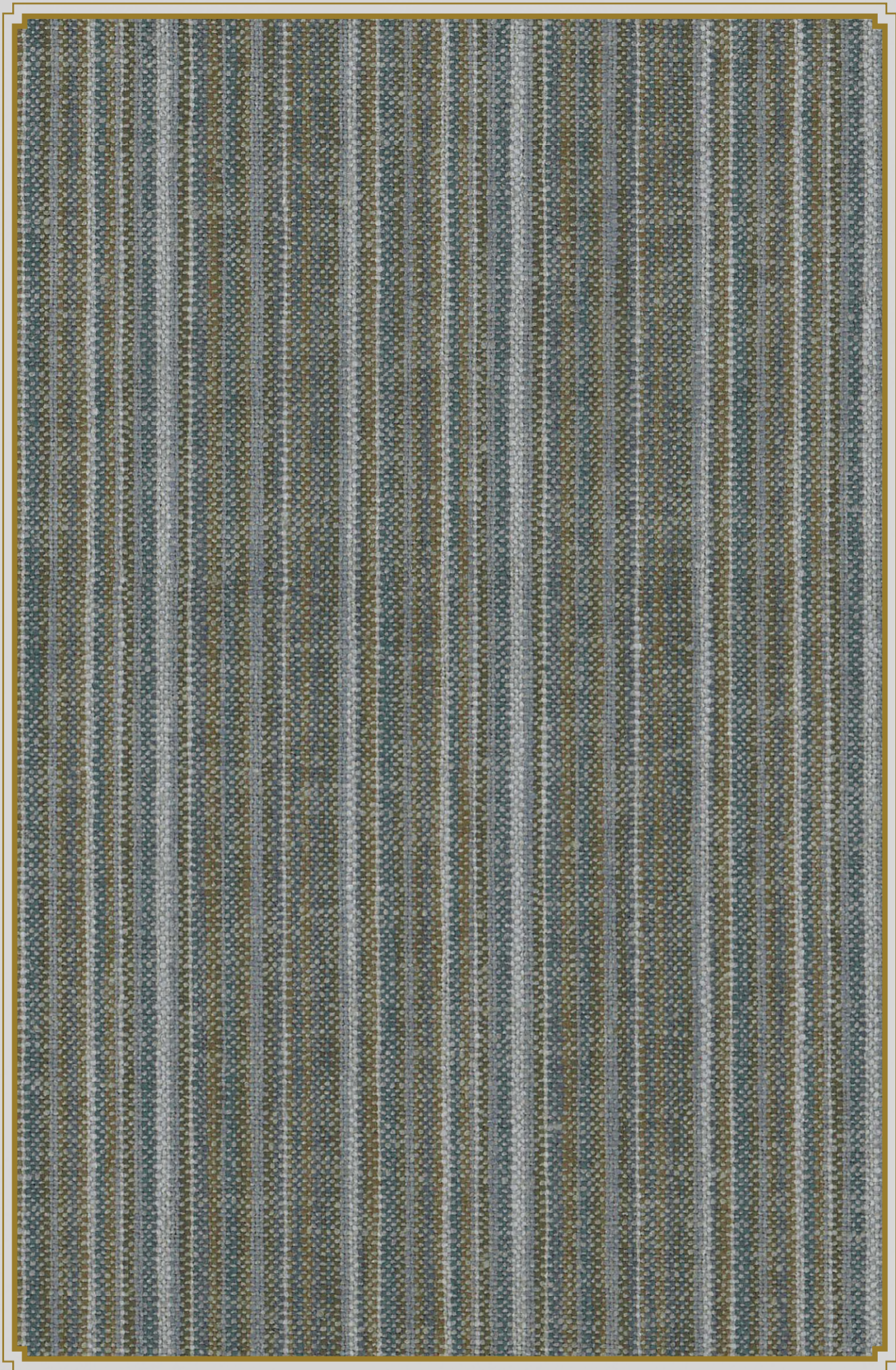
MITHU

NLF24MIT001



GSM	MARTINDALE	COMPOSITION	V. REPEAT (CM)	H. REPEAT (CM)
380	8000	100% LI	28.2	46.2

[Back](#)



NAPOLEON STRIPE

NLF24NAP002



GSM	MARTINDALE	COMPOSITION	V. REPEAT (CM)	H. REPEAT (CM)
530	30000	45% VI, 35% PL, 20% LI	STRIPE	10

[Back](#)



ANARDANA BLOSSOM EMBROIDERY

NLF24ABE002



GSM	MARTINDALE	COMPOSITION	V. REPEAT (CM)	H. REPEAT (CM)
460	N/A	60% LI, 40% VI	23	33.7

[Back](#)



MADURA

NLF24MAD001



GSM	MARTINDALE	COMPOSITION	V. REPEAT (CM)	H. REPEAT (CM)
518	78000	59% CO, 17% VI, 12% LI, 12% PL	0	48.5

Back



FEZ

NLF24FEZ003



GSM	MARTINDALE	COMPOSITION	V. REPEAT (CM)	H. REPEAT (CM)
380	11000	100% LI	30.2	46.2

Back



NARGIS

NLF24NAR003



GSM	MARTINDALE	COMPOSITION	V. REPEAT (CM)	H. REPEAT (CM)
220	8000	100% LI	19.5	27.6

[Back](#)



ANARDANA BLOSSOM EMBROIDERY

NLF24ABE003



GSM	MARTINDALE	COMPOSITION	V. REPEAT (CM)	H. REPEAT (CM)
460	N/A	60% LI, 40% VI	23	33.7

[Back](#)



FEZ WEAVE

NLF24FEW001



GSM	MARTINDALE	COMPOSITION	V. REPEAT (CM)	H. REPEAT (CM)
655	40000	55% CO, 28% VI, 17% WL	28.8	68.5

[Back](#)



FEZ

NLF24FEZ002



GSM	MARTINDALE	COMPOSITION	V. REPEAT (CM)	H. REPEAT (CM)
380	11000	100% LI	30.2	46.2

Back



ANARDANA

NLF24ANA002



GSM	MARTINDALE	COMPOSITION	V. REPEAT (CM)	H. REPEAT (CM)
265	11000	100% LI	69	69.7

[Back](#)



TOLLYGUNGE

NLF24TOL005



GSM	MARTINDALE	COMPOSITION	V. REPEAT (CM)	H. REPEAT (CM)
518	66000	51% VI, 32% CO, 16% PA, 1% PL	N/A	N/A

[Back](#)



TOLLYGUNGE

NLF24TOL008



GSM	MARTINDALE	COMPOSITION	V. REPEAT (CM)	H. REPEAT (CM)
518	66000	51% VI, 32% CO, 16% PA, 1% PL	N/A	N/A

[Back](#)



VINTAGE KILIM

NLF24VIN002



GSM	MARTINDALE	COMPOSITION	V. REPEAT (CM)	H. REPEAT (CM)
760	10000	45% LI, 33% JU, 22% CO	29	71

[Back](#)



NARGIS

NLF24NAR002



GSM	MARTINDALE	COMPOSITION	V. REPEAT (CM)	H. REPEAT (CM)
220	8000	100% LI	19.5	27.6

[Back](#)



NAPOLEON STRIPE

NLF24NAP004



GSM	MARTINDALE	COMPOSITION	V. REPEAT (CM)	H. REPEAT (CM)
530	30000	45% VI, 35% PL, 20% LI	STRIPE	10

[Back](#)



FEZ

NLF24FEZ001



GSM	MARTINDALE	COMPOSITION	V. REPEAT (CM)	H. REPEAT (CM)
380	11000	100% LI	30.2	46.2

[Back](#)



FEZ WEAVE

NLF24FEW003



GSM	MARTINDALE	COMPOSITION	V. REPEAT (CM)	H. REPEAT (CM)
655	40000	55% CO, 28% VI, 17% WL	28.8	68.5

[Back](#)



VINTAGE KILIM

NLF24VIN001



GSM	MARTINDALE	COMPOSITION	V. REPEAT (CM)	H. REPEAT (CM)
760	10000	45% LI, 33% JU, 22% CO	29	71

[Back](#)



NAPOLEON STRIPE

NLF24NAP001



GSM	MARTINDALE	COMPOSITION	V. REPEAT (CM)	H. REPEAT (CM)
530	30000	45% VI, 35% PL, 20% LI	STRIPE	10

[Back](#)



TOLLYGUNGE

NLF24TOL006



GSM	MARTINDALE	COMPOSITION	V. REPEAT (CM)	H. REPEAT (CM)
518	66000	51% VI, 32% CO, 16% PA, 1% PL	N/A	N/A

[Back](#)



MADURA
NLF24MAD002



GSM	MARTINDALE	COMPOSITION	V. REPEAT (CM)	H. REPEAT (CM)
518	78000	59% CO, 17% VI, 12% LI, 12% PL	0	48.5

Back

DESIGN	MARTINDALE	WASH CARE	WIDTH	COMPOSITION
VINTAGE KILIM	10000		142	45% LI, 33% JU, 22% CO
TOLLYGUNGE	66000		140	51% VI, 32% CO, 16% PA, 1% PL
FEZ	11000		139	100% LI
NARGIS	8000		138	100% LI
MADURA	78000		145	59% CO, 17% VI, 12% LI, 12% PL
FEZ WEAVE	40000		137	55% CO, 28% VI, 17% WL
MITHU	8000		139	100% LI
TOLLYGUNGE	66000		140	51% VI, 32% CO, 16% PA, 1% PL
TOLLYGUNGE	66000		140	51% VI, 32% CO, 16% PA, 1% PL
ANARDANA	11000		139.5	100% LI
ANARDANA BLOSSOM EMBROIDERY	N/A		135.5	60% LI, 40% VI
NAPOLEON STRIPE	30000		139	45% VI, 35% PL, 20% LI
MITHU	8000		139	100% LI
NAPOLEON STRIPE	30000		139	45% VI, 35% PL, 20% LI
ANARDANA BLOSSOM EMBROIDERY	N/A		135.5	60% LI, 40% VI

DESIGN	MARTINDALE	WASH CARE	WIDTH	COMPOSITION
MADURA	78000		145	59% CO, 17% VI, 12% LI, 12% PL
FEZ	11000		139	100% LI
NARGIS	8000		138	100% LI
ANARDANA BLOSSOM EMBROIDER	N/A		135.5	60% LI, 40% VI
FEZ WEAVE	40000		137	55% CO, 28% VI, 17% WL
FEZ	11000		139	100% LI
ANARDANA	11000		139.5	100% LI
TOLLYGUNGE	66000		140	51% VI, 32% CO, 16% PA, 1% PL
TOLLYGUNGE	66000		140	51% VI, 32% CO, 16% PA, 1% PL
VINTAGE KILIM	10000		142	45% LI, 33% JU, 22% CO
NARGIS	8000		138	100% LI
NAPOLEON STRIPE	30000		139	45% VI, 35% PL, 20% LI
FEZ	11000		139	100% LI
FEZ WEAVE	40000		137	55% CO, 28% VI, 17% WL
VINTAGE KILIM	10000		142	45% LI, 33% JU, 22% CO

DESIGN	MARTINDALE	WASH CARE	WIDTH	COMPOSITION
NAPOLEON STRIPE	30000		139	45% VI, 35% PL, 20% LI
TOLLYGUNGE	66000		140	51% VI, 32% CO, 16% PA, 1% PL
MADURA	78000		145	59% CO, 17% VI, 12% LI, 12% PL