


.....
.....
.....
: : S A B Y A S A C H I : :
.....
..... for
.....
.....
n i l a y a
.....
.....

furnishings by  asianpaints

Paris-Calcutta
VOLUME I

SABYASACHI



What i design is the result of myriad inspirations – whether it’s fashion or homes. And creating designs for Heartland was like stepping into a familiar world, textured by a variety of experiences, acquisitions, memories and stories that have stayed with me, knowingly and unknowingly: the skillfully painted fabrics that were born along the Coromandel Coast; embroideries from an ancient world; well-remembered motifs and patterns that continue to enchant; old-world Calcutta with its fading luxury; the traditions of miniaturists from colonial-era murshidabad.

The Thar, Makhmal and Soofah collections that comprise Heartland celebrate the beauty of classical motifs reinterpreted and hand painted by artists from the Sabyasachi Art Foundation. They find expression through a reimagining of traditional patterns and a distinctive palette of colours I have evolved over time. These carefully crafted fabrics can transform spaces and perhaps your perspective as well. The patterns, designs and motifs that make up the fabric collections of Heartland is an endeavour to make this journey of transformation uncommon and unforgettable – as it should be.

After all, at the heart of every home is the story of the people who Inhabit it, make it and shape it just the way they like it. Layer it with well-loved elements and their distinct styles. Heartland, i hope, serves as a reminder of the beauty that still remains, and endures, in an uncertain world.

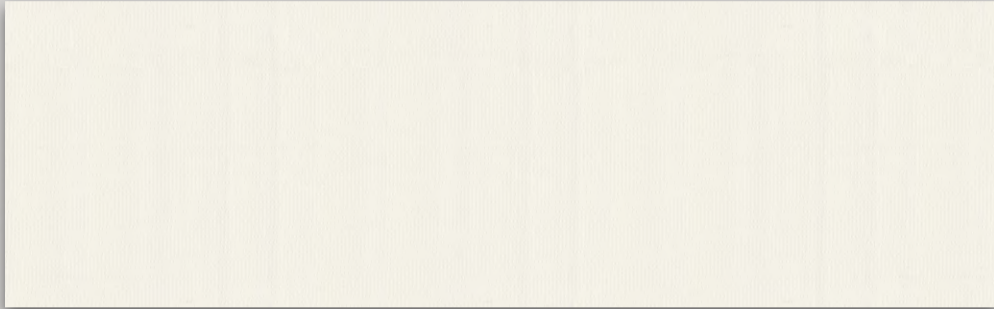


Paris-Calcutta

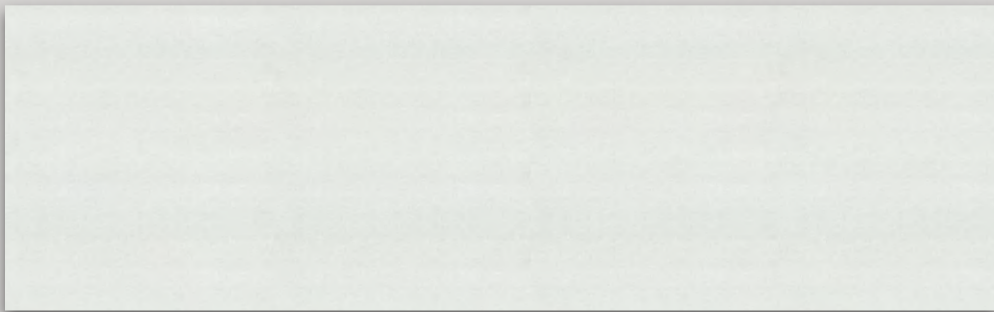
Volume I



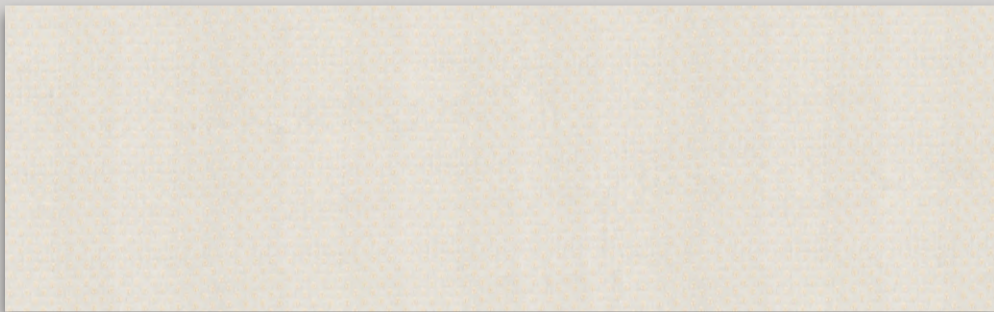
NLF24GAE002



AAA2021
LUMSH111056



AAA2022
LEUER115787



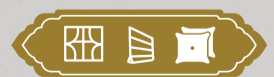
NLF24KPE001



NLF24LAE001



NLF24TCE003





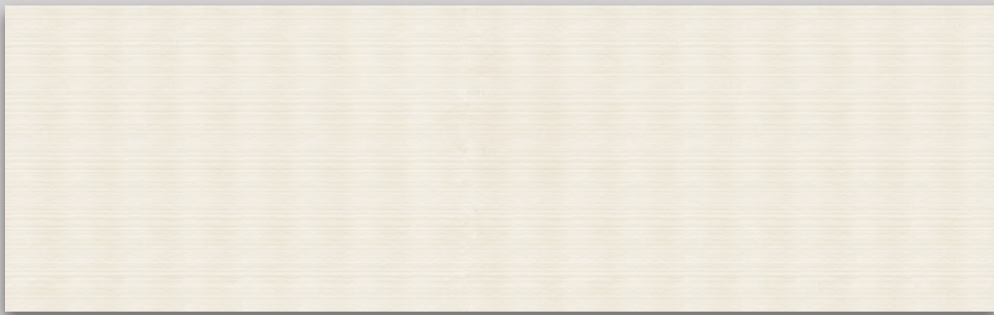
AAA2021
LUMSH111063



NLF24KHA002



NLF24ABE004



AAA2022
PARSH114927



NLF24TOL001



NLF24TOL009





NLF24GAE001



NLF24LAE003



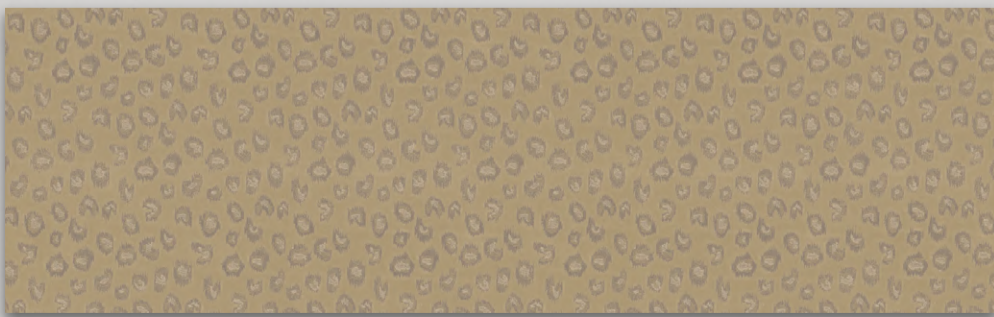
NLF24PSE003



NLF24AMO003



NLF24TCJ003



NLF24PAN004





NLF24AMO002



NLF24LAD002



NLF24GAE003



NLF24LAP003



NLF24BEL003



NLF24LAP002





NLF24TOL002



NLF24TOL003



NLF24TCP001



NLF24KHA001

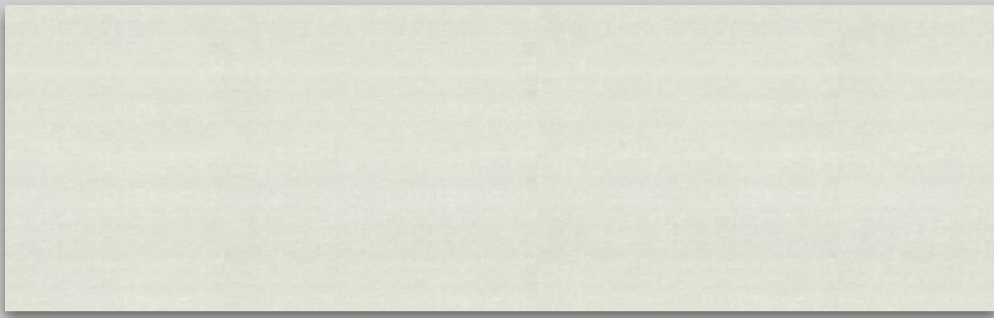


NLF24BEL004



NLF24HIR004





AAA2022
LEUER115788



NLF24PSP001



NLF24AMO001





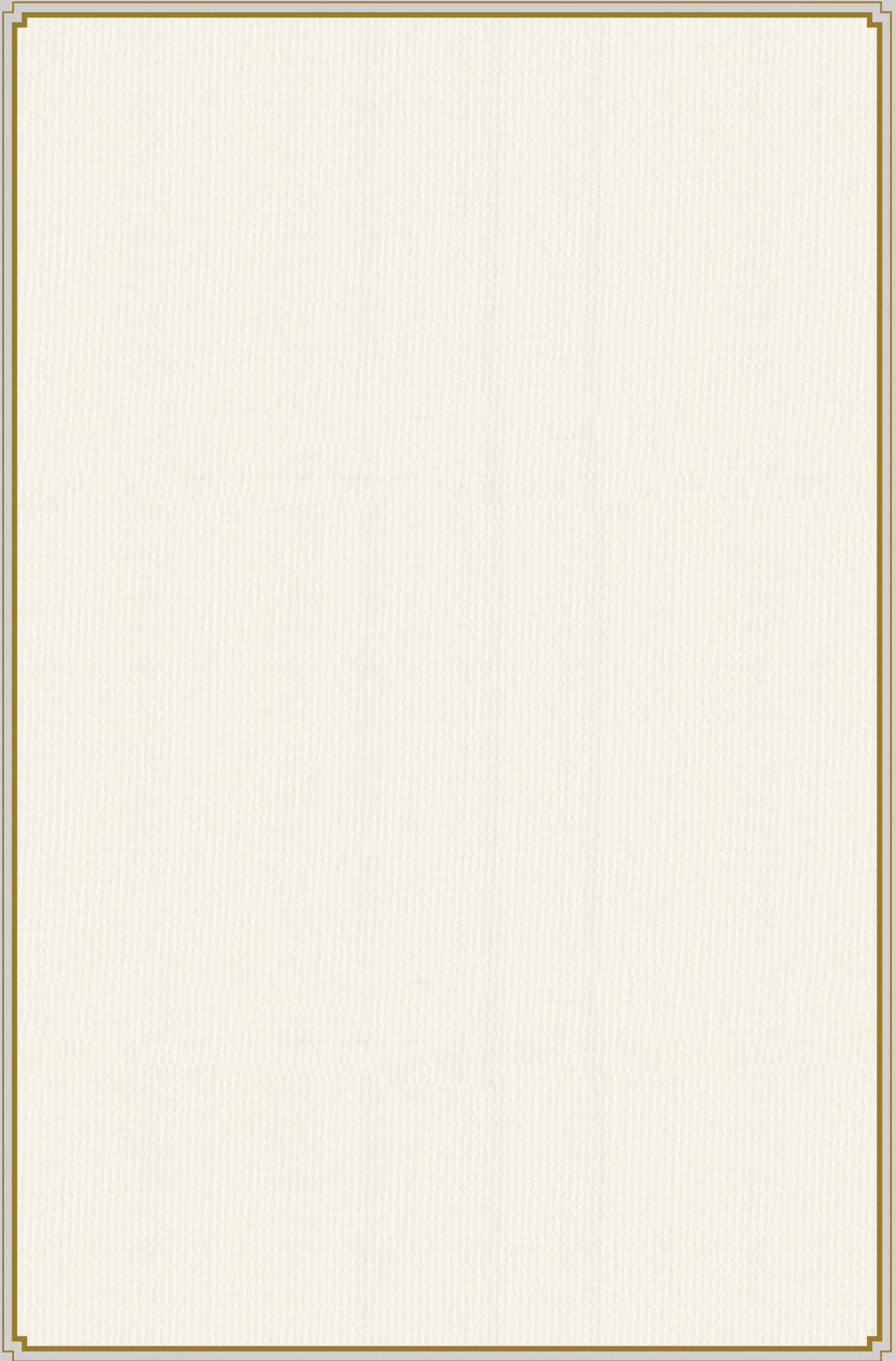
Galecha Embroidery

NLF24GAE002



GSM	MARTINDALE	COMPOSITION	V. REPEAT (CM)	H. REPEAT (CM)
310	N/A	35% LI, 34% VI, 18% CO, 13% PL	47.5	47.8

[Back](#)



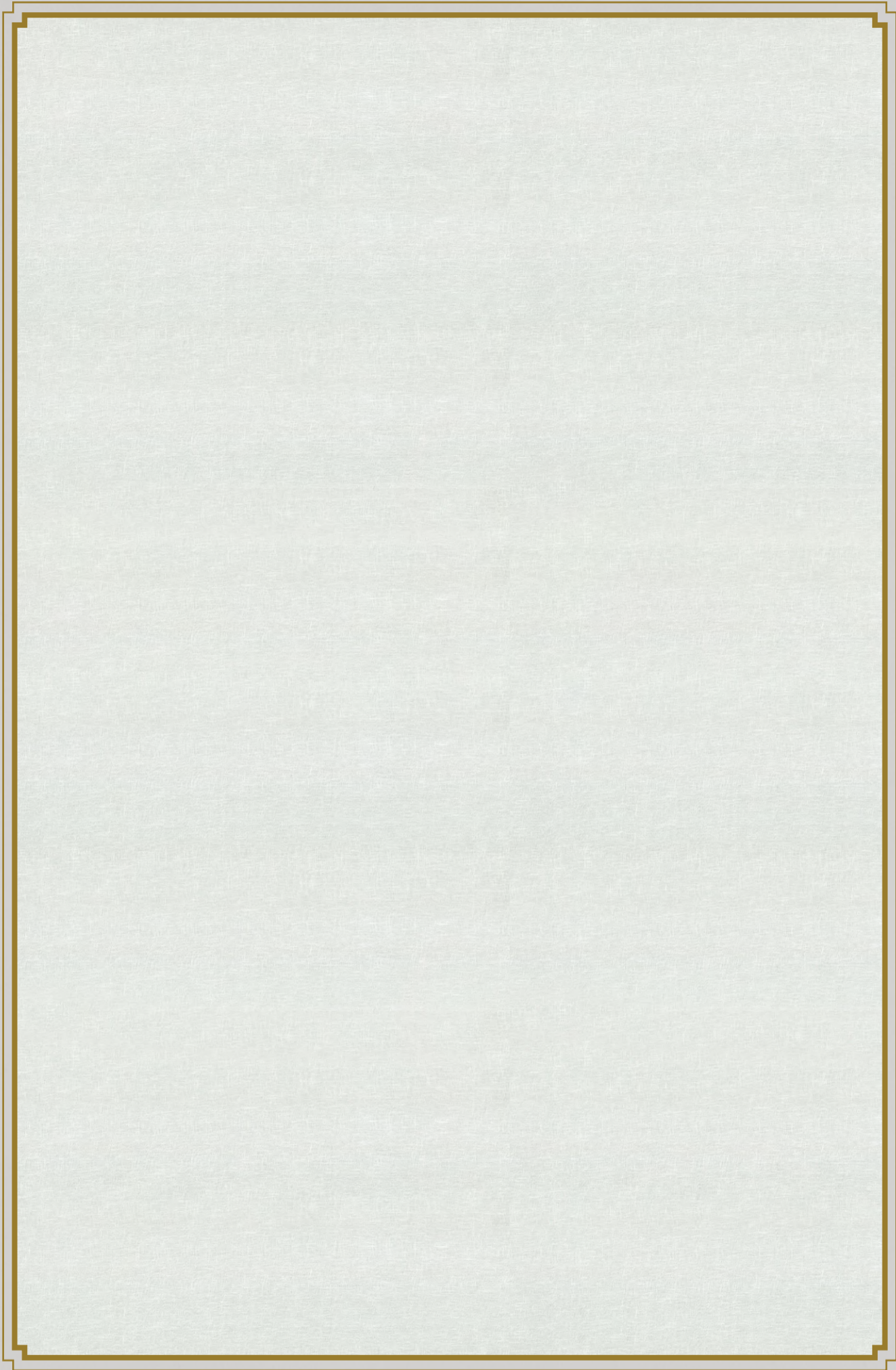
Wallis

AAA2021LUMSH111056



GSM	MARTINDALE	COMPOSITION	V. REPEAT (CM)	H. REPEAT (CM)
135	N/A	74% LI, 16% CO, 10% PL	1.3	1.6

Back



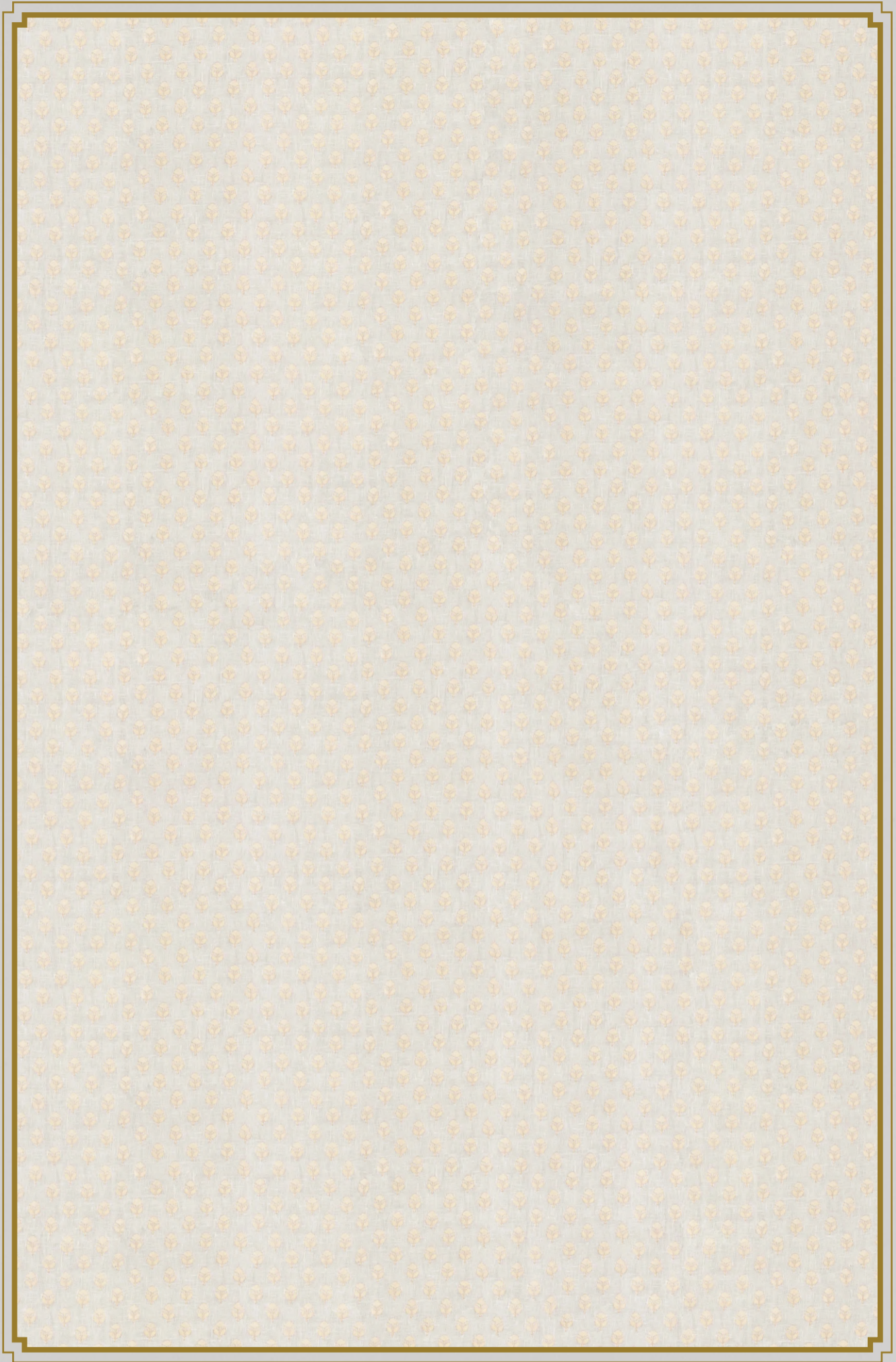
Mesh

AAA2022LEUER115787



GSM	MARTINDALE	COMPOSITION	V. REPEAT (CM)	H. REPEAT (CM)
102	N/A	60% CO, 40% PL	N/A	N/A

Back



Khadi Petit Embroidery

NLF24KPE001



GSM	MARTINDALE	COMPOSITION	V. REPEAT (CM)	H. REPEAT (CM)
200	N/A	55% LI, 38% VI, 7% ZA	5.2	5.4

[Back](#)



Landour Damask Embroidery

NLF24LAE001



GSM	MARTINDALE	COMPOSITION	V. REPEAT (CM)	H. REPEAT (CM)
444	N/A	55% VI, 26% CO, 19% LI	45.5	45.5

[Back](#)



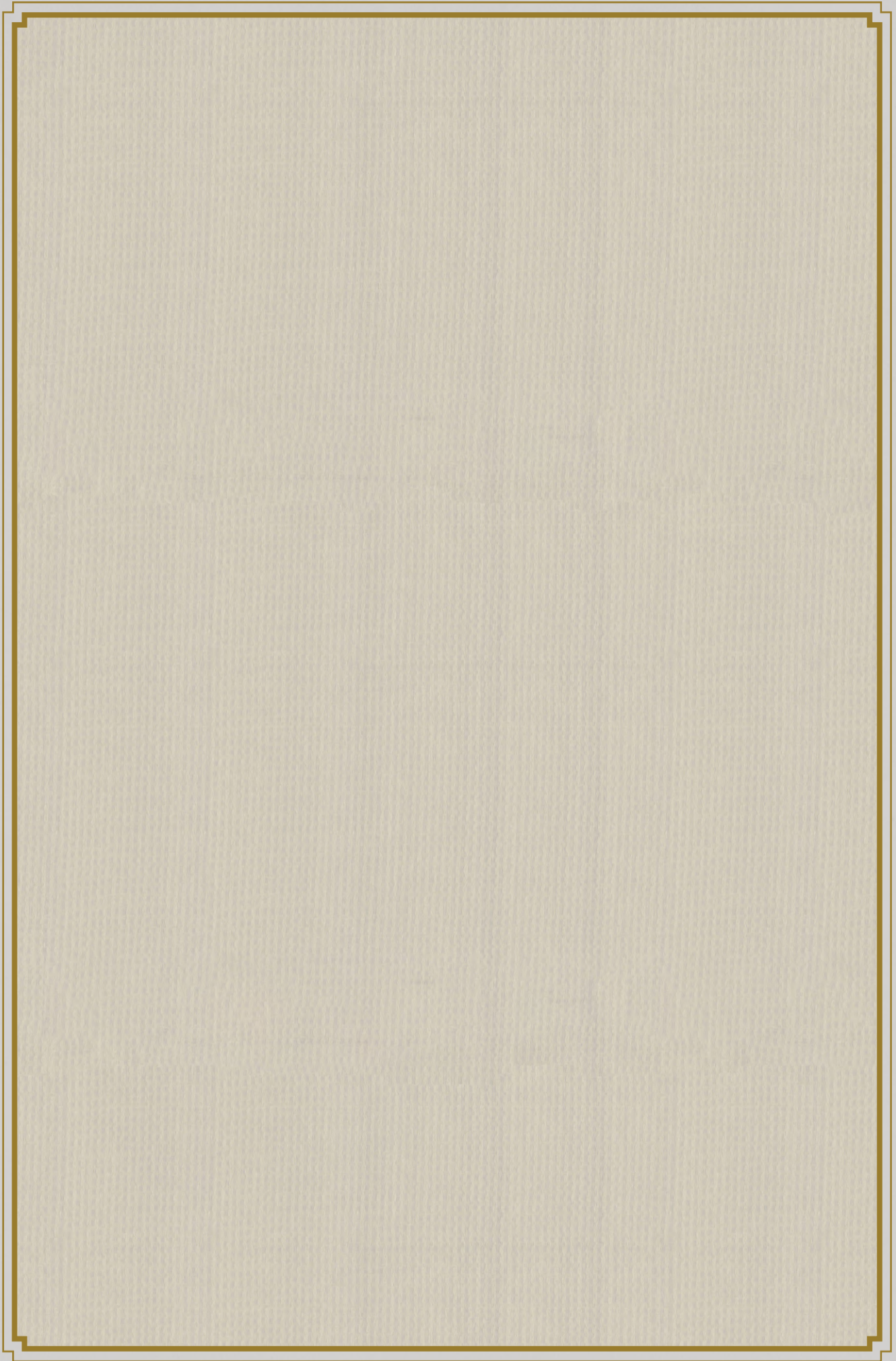
The Company Paisley Embroidery

NLF24TCE003



GSM	MARTINDALE	COMPOSITION	V. REPEAT (CM)	H. REPEAT (CM)
580	N/A	52% CO, 48% LI	23	15.2

[Back](#)



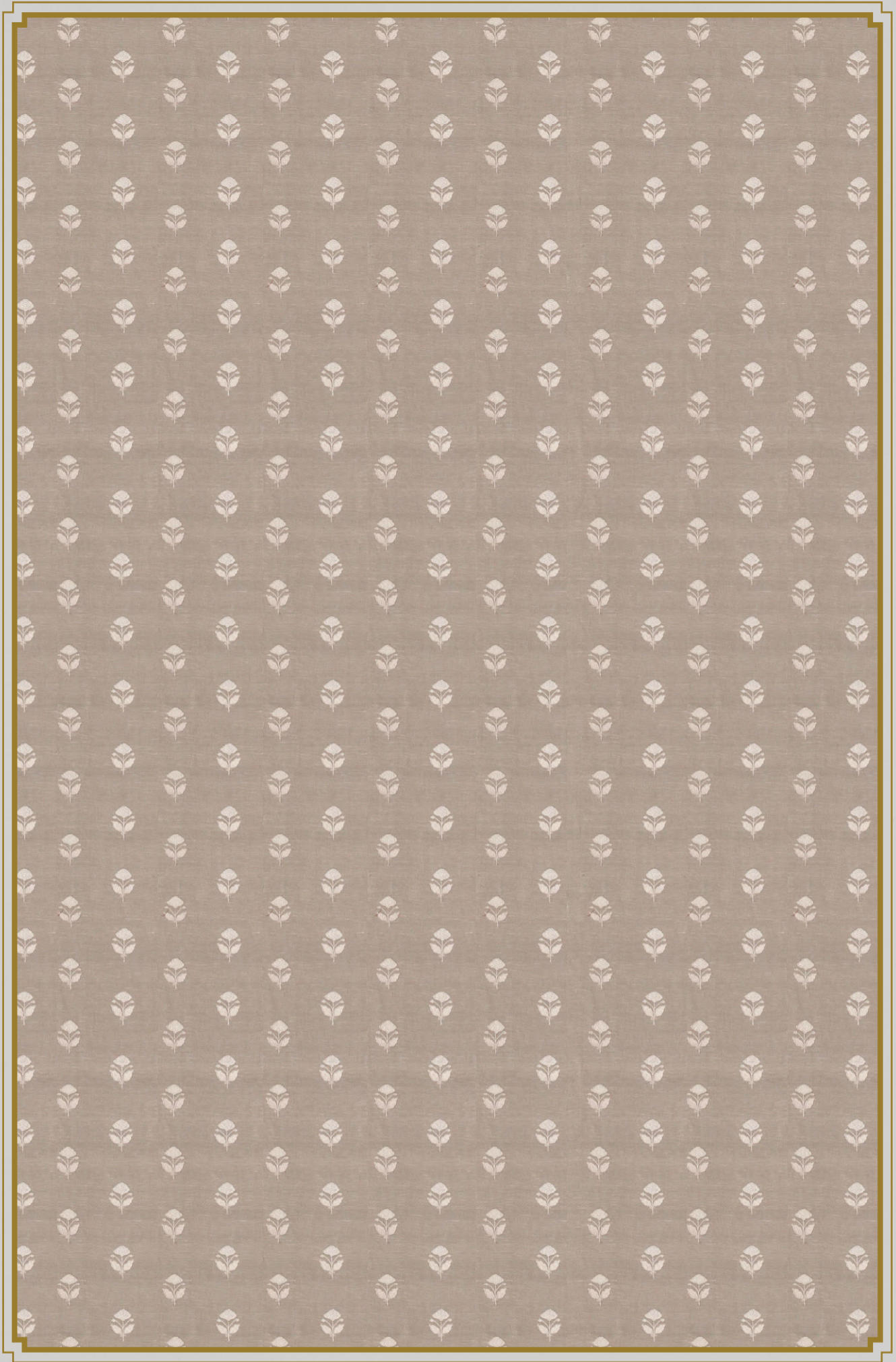
Wallis

AAA2021LUMSH111063



GSM	MARTINDALE	COMPOSITION	V. REPEAT (CM)	H. REPEAT (CM)
135	N/A	74% LI, 16% CO, 10% PL	1.3	1.6

Back



Khadi Embroidery

NLF24KHA002



GSM	MARTINDALE	COMPOSITION	V. REPEAT (CM)	H. REPEAT (CM)
156	N/A	71% LI, 27% VI, 2% ZA	9.5	16.1

Back



Anardana Blossom Embroidery

NLF24ABE004



GSM	MARTINDALE	COMPOSITION	V. REPEAT (CM)	H. REPEAT (CM)
460	N/A	60% LI, 40% VI	23	33.7

[Back](#)



Vaya

AAA2022PARSH114927



GSM	MARTINDALE	COMPOSITION	V. REPEAT (CM)	H. REPEAT (CM)
124	N/A	77% CO, 23% PL	STRIPE	15.3

[Back](#)



Tollygunge

NLF24TOL001



GSM	MARTINDALE	COMPOSITION	V. REPEAT (CM)	H. REPEAT (CM)
518	66000	51% VI, 32% CO, 16% PA, 1% PL	N/A	N/A

Back



Tollygunge

NLF24TOL009



GSM	MARTINDALE	COMPOSITION	V. REPEAT (CM)	H. REPEAT (CM)
518	66000	51% VI, 32% CO, 16% PA, 1% PL	N/A	N/A

[Back](#)



Galecha Embroidery

NLF24GAE001



GSM	MARTINDALE	COMPOSITION	V. REPEAT (CM)	H. REPEAT (CM)
310	N/A	35% LI, 34% VI, 18% CO, 13% PL	47.5	47.8

[Back](#)



Landour Damask Embroidery

NLF24LAE003



GSM	MARTINDALE	COMPOSITION	V. REPEAT (CM)	H. REPEAT (CM)
444	N/A	55% VI, 26% CO, 19% LI	45.5	45.5

[Back](#)



Persian Sanctuary Embroidery

NLF24PSE003



GSM	MARTINDALE	COMPOSITION	V. REPEAT (CM)	H. REPEAT (CM)
500	N/A	72% VI, 17% LI, 8% CO, 3% ZA	46.8	45.5

[Back](#)



Amoureux Embroidery

NLF24AMO003



GSM	MARTINDALE	COMPOSITION	V. REPEAT (CM)	H. REPEAT (CM)
370	N/A	76% LI, 19% VI, 5% ZA	15.7	33.5

[Back](#)



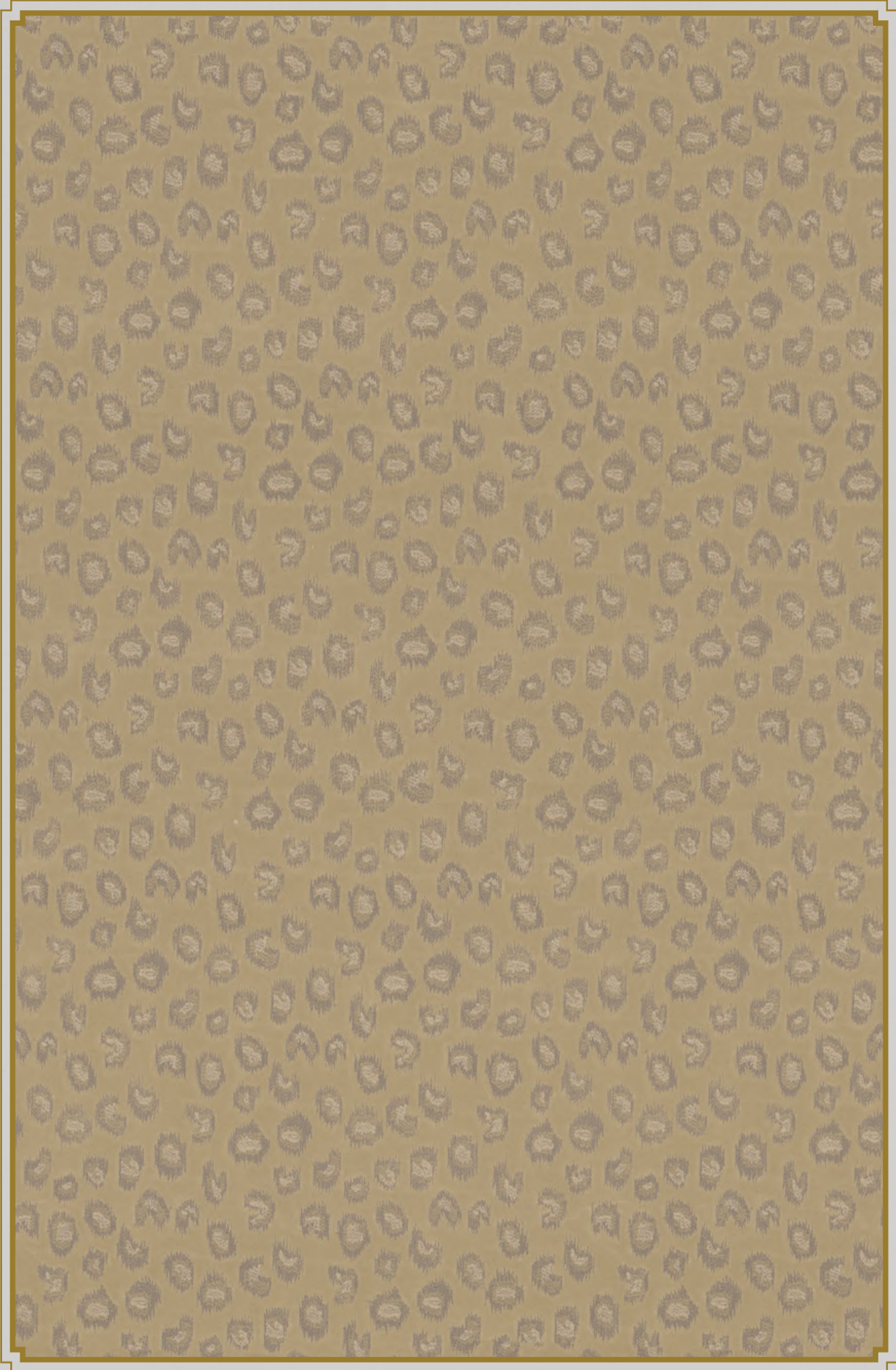
The Company Paisley Weave

NLF24TCJ003



GSM	MARTINDALE	COMPOSITION	V. REPEAT (CM)	H. REPEAT (CM)
390	12000	55% CO, 27% PA, 18% LI	22.2	18.1

[Back](#)



Pantherias Embroidery

NLF24PAN004



GSM	MARTINDALE	COMPOSITION	V. REPEAT (CM)	H. REPEAT (CM)
678	70000	77% CO, 23% VI	23.4	19.2

[Back](#)



Amoureux Embroidery

NLF24AMO002



GSM	MARTINDALE	COMPOSITION	V. REPEAT (CM)	H. REPEAT (CM)
370	N/A	76% LI, 19% VI, 5% ZA	15.7	33.5

[Back](#)



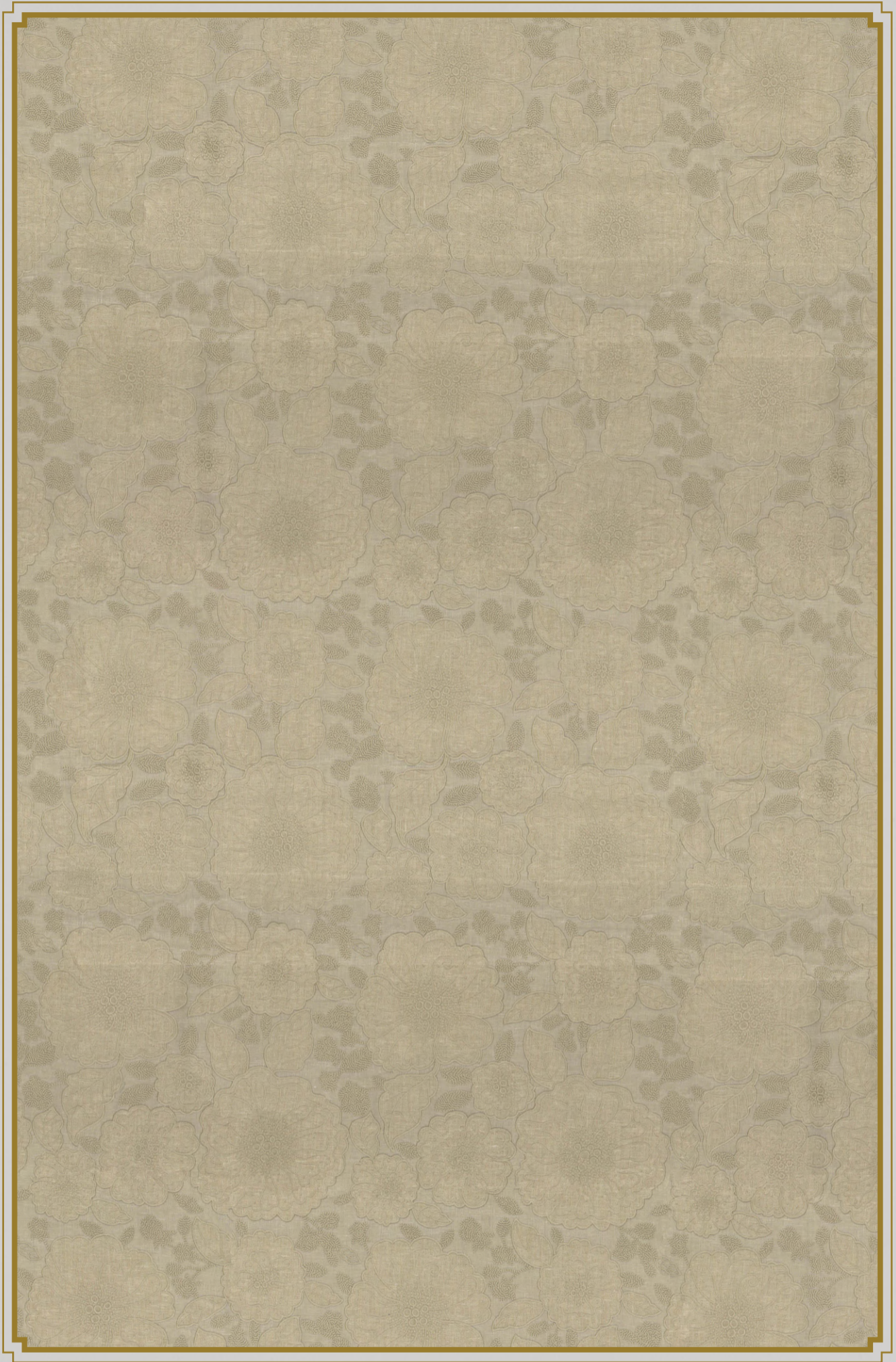
Landour Damask Jute

NLF24LAD002



GSM	MARTINDALE	COMPOSITION	V. REPEAT (CM)	H. REPEAT (CM)
380	11000	100% LI	50	35.5

[Back](#)



Galecha Embroidery

NLF24GAE003



GSM	MARTINDALE	COMPOSITION	V. REPEAT (CM)	H. REPEAT (CM)
310	N/A	35% LI, 34% VI, 18% CO, 13% PL	47.5	47.8

[Back](#)



Landour Damask

NLF24LAP003



GSM	MARTINDALE	COMPOSITION	V. REPEAT (CM)	H. REPEAT (CM)
380	11000	100% LI	50	35.5

[Back](#)



Belle

NLF24BEL003



GSM	MARTINDALE	COMPOSITION	V. REPEAT (CM)	H. REPEAT (CM)
644	40000	61% WL, 25% CO, 14% PA	12.3	11.2

Back



Landour Damask

NLF24LAP002



GSM	MARTINDALE	COMPOSITION	V. REPEAT (CM)	H. REPEAT (CM)
380	11000	100% LI	50	35.5

[Back](#)



Tollygunge

NLF24TOL002



GSM	MARTINDALE	COMPOSITION	V. REPEAT (CM)	H. REPEAT (CM)
518	66000	51% VI, 32% CO, 16% PA, 1% PL	N/A	N/A

[Back](#)



Tollygunge

NLF24TOL003



GSM	MARTINDALE	COMPOSITION	V. REPEAT (CM)	H. REPEAT (CM)
518	66000	51% VI, 32% CO, 16% PA, 1% PL	N/A	N/A

[Back](#)



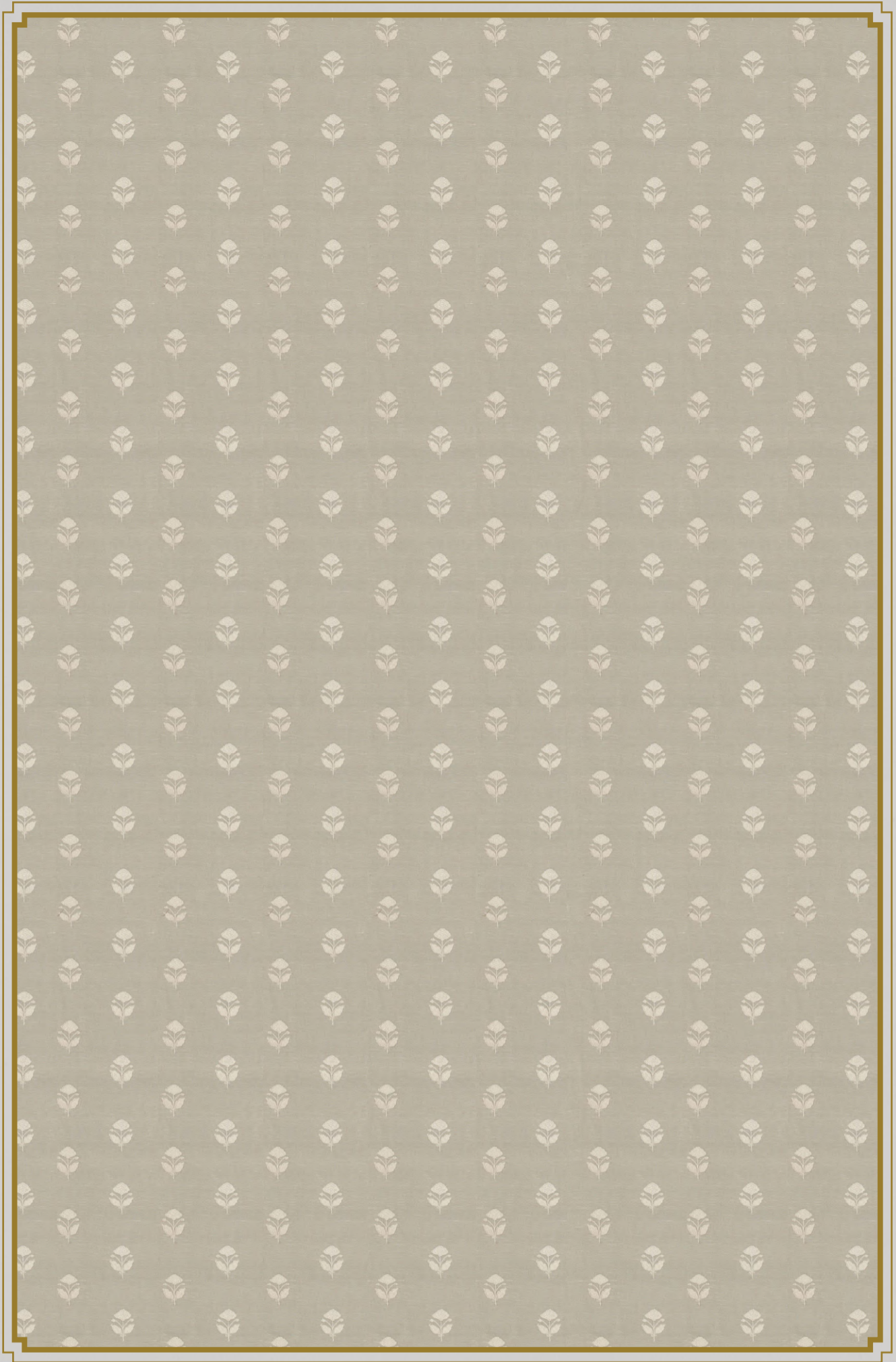
The Company Paisley LI

NLF24TCP001



GSM	MARTINDALE	COMPOSITION	V. REPEAT (CM)	H. REPEAT (CM)
265	11000	100% LI	25.8	17.6

[Back](#)



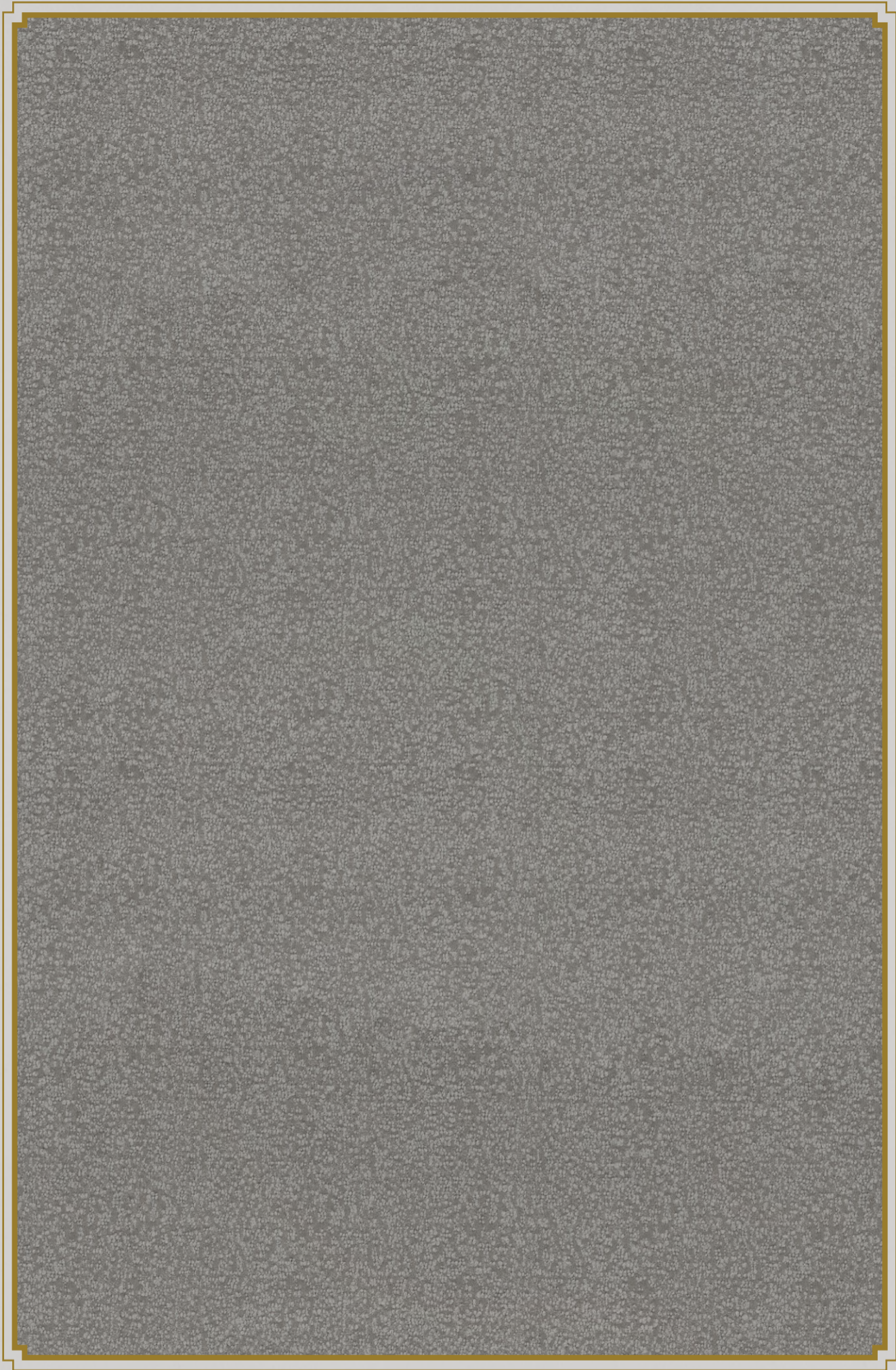
Khadi Embroidery

NLF24KHA001



GSM	MARTINDALE	COMPOSITION	V. REPEAT (CM)	H. REPEAT (CM)
156	N/A	71% LI, 27% VI, 2% ZA	9.5	16.1

[Back](#)



Belle

NLF24BEL004



GSM	MARTINDALE	COMPOSITION	V. REPEAT (CM)	H. REPEAT (CM)
644	40000	61% WL, 25% CO, 14% PA	12.3	11.2

Back



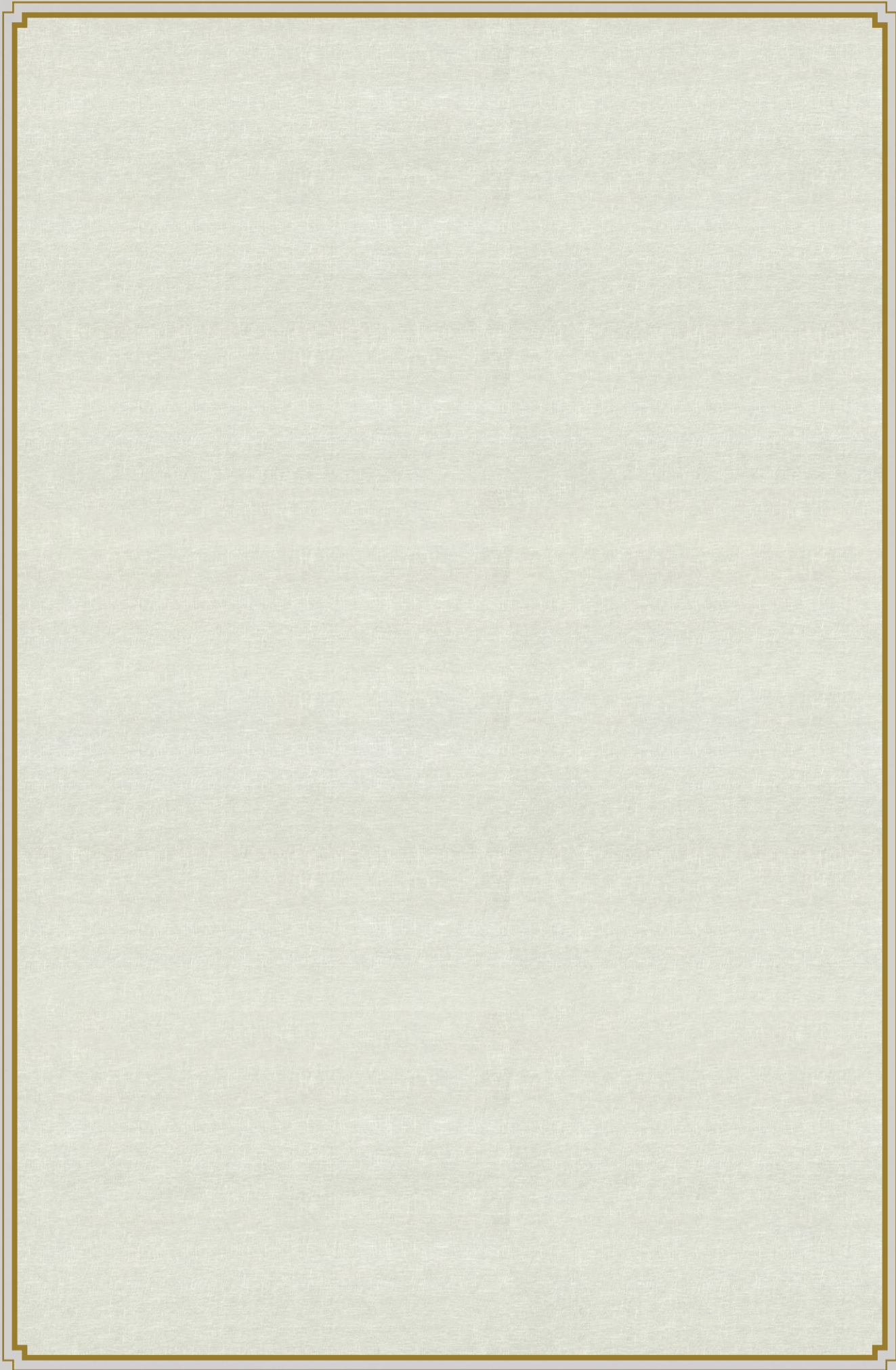
Hiranbagh

NLF24HIR004



GSM	MARTINDALE	COMPOSITION	V. REPEAT (CM)	H. REPEAT (CM)
240	4000	100% LI	67	69.2

Back



Mesh

AAA2022LEUER115788



GSM	MARTINDALE	COMPOSITION	V. REPEAT (CM)	H. REPEAT (CM)
102	N/A	60% CO, 40% PL	N/A	N/A

Back



Persian Sanctuary

NLF24PSP001



GSM	MARTINDALE	COMPOSITION	V. REPEAT (CM)	H. REPEAT (CM)
220	19000	100% LI	45	35.3

[Back](#)



Amoureux Embroidery

NLF24AMO001



GSM	MARTINDALE	COMPOSITION	V. REPEAT (CM)	H. REPEAT (CM)
370	N/A	76% LI, 19% VI, 5% ZA	15.7	33.5

[Back](#)

DESIGN	MARTINDALE	WASH CARE	WIDTH	COMPOSITION
GALECHA EMBROIDERY	N/A		287	35% LI, 34% VI, 18% CO, 13% PL
WALLIS	N/A		320	74% LI, 16% CO, 10% PL
MESH	N/A		312	60% CO, 40% PL
KHADI PETTT EMBROIDERY	N/A		286	55% LI, 38% VI, 7% ZA
LANDOUR DAMASK EMBROIDERY	N/A		137.5	55% VI, 26% CO, 19% LI
THE COMPANY PAISLEY EMBROIDERY	N/A		137	52% CO, 48% LI
WALLIS	N/A		320	74% LI, 16% CO, 10% PL
KHADI EMBROIDERY	N/A		285	71% LI, 27% VI, 2% ZA
ANARDANA BLOSSOM EMBROIDERY	N/A		135.5	60% LI, 40% VI
VAYA	N/A		323	77% CO, 23% PL
TOLLYGUNGE	66000		140	51% VI, 32% CO, 16% PA, 1% PL
TOLLYGUNGE	66000		140	51% VI, 32% CO, 16% PA, 1% PL
GALECHA EMBROIDERY	N/A		287	35% LI, 34% VI, 18% CO, 13% PL
LANDOUR DAMASK EMBROIDERY	N/A		137.5	55% VI, 26% CO, 19% LI
PERSIAN SANCTUARY EMBROIDERY	N/A		138	72% VI, 17% LI, 8% CO, 3% ZA

DESIGN	MARTINDALE	WASH CARE	WIDTH	COMPOSITION
AMOUREUX EMBROIDERY	N/A		134	76% LI, 19% VI, 5% ZA
THE COMPANY PAISLEY WEAVE	12000		142.5	55% CO, 27% PA, 18% LI
PANTHERIAS EMBROIDERY	70000		135.5	77% CO, 23% VI
AMOUREUX EMBROIDERY	N/A		134	76% LI, 19% VI, 5% ZA
LANDOUR DAMASK JUT	11000		140	100% LI
GALECHA EMBROIDERY	N/A		287	35% LI, 34% VI, 18% CO, 13% PL
LANDOUR DAMASK	11000		140	100% LI
BELLE	40000		136	61% WL, 25% CO, 14% PA
LANDOUR DAMASK	11000		140	100% LI
TOLLYGUNGE	66000		140	51% VI, 32% CO, 16% PA, 1% PL
TOLLYGUNGE	66000		140	51% VI, 32% CO, 16% PA, 1% PL
THE COMPANY PAISLEY LINEN	11000		141	100% LI
KHADI EMBROIDERY	N/A		285	71% LI, 27% VI, 2% ZA
BELLE	40000		136	61% WL, 25% CO, 14% PA
HIRANBAGH	4000		139	100% LI

DESIGN	MARTINDALE	WASH CARE	WIDTH	COMPOSITION
MESH	N/A		312	60% CO, 40% PL
PERSIAN SANCTUARY	19000		141	100% LI
AMOUREUX EMBROIDERY	N/A		134	76% LI, 19% VI, 5% ZA